

The Benefits of Alignment

Collective Impact of IPLAN, We Choose Health, and SHIP

Experiences from the Field

**St. Clair County,
Illinois**



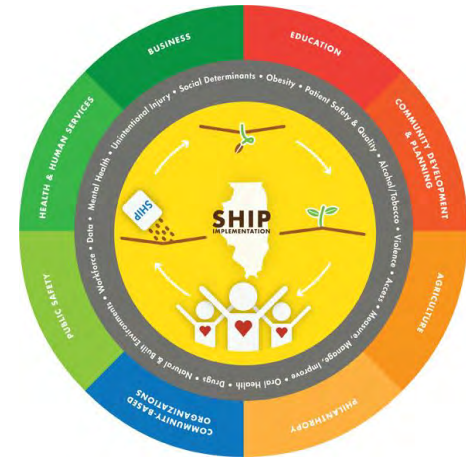
Kevin D. Hutchison R.N., M.S., M.P.H., C.P.H.A.

Executive Director

St. Clair County Health Department

September, 2013

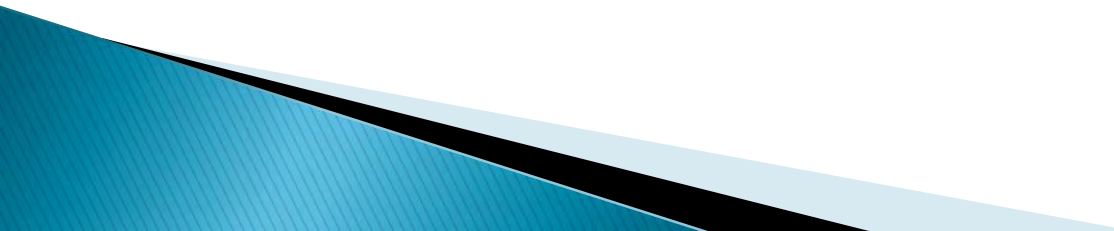
What is the Illinois SHIP?



- ▶ Lists priorities and strategies for health status and public health system improvement in Illinois
- ▶ Updated periodically by statute; next one due in 2016
- ▶ Most recent version created in 2010

SHIP Vision

Optimal physical, mental and social well-being for all people in Illinois through a high-functioning public health system comprised of active public, private and voluntary partners.



SHIP Public System Priorities

- 1) Improve Access to Health Services
- 2) Enhance Data and Information Technology
- 3) Address Social Determinants of Health and Health Disparities
- 4) Measure, Manage, Improve and Sustain the Public Health System
- 5) Assure a Sufficient Workforce and Human Resources

(note: System Priorities are not listed in priority order)



SHIP Priority Health Concerns

- 1) Alcohol/Tobacco
- 2) Use of Illicit Drugs/Misuse of Legal Drugs
- 3) Mental Health
- 4) Natural and Built Environment
- 5) Obesity: Nutrition and Physical Activity
- 6) Oral Health
- 7) Patient Safety and Quality
- 8) Unintentional Injury
- 9) Violence

(note: Health concerns are not not ranked in priority order.)



SHIP Implementation Plan

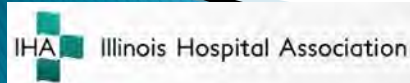
- ▶ Broader SHIP implementation plan, authored by Governor-appointed Implementation Coordination Council
- ▶ Available on the web at wechoosehealth.illinois.gov and at the SHIP Implementation Web site




SHIP Implementation Coordination Council



IFMC-IL

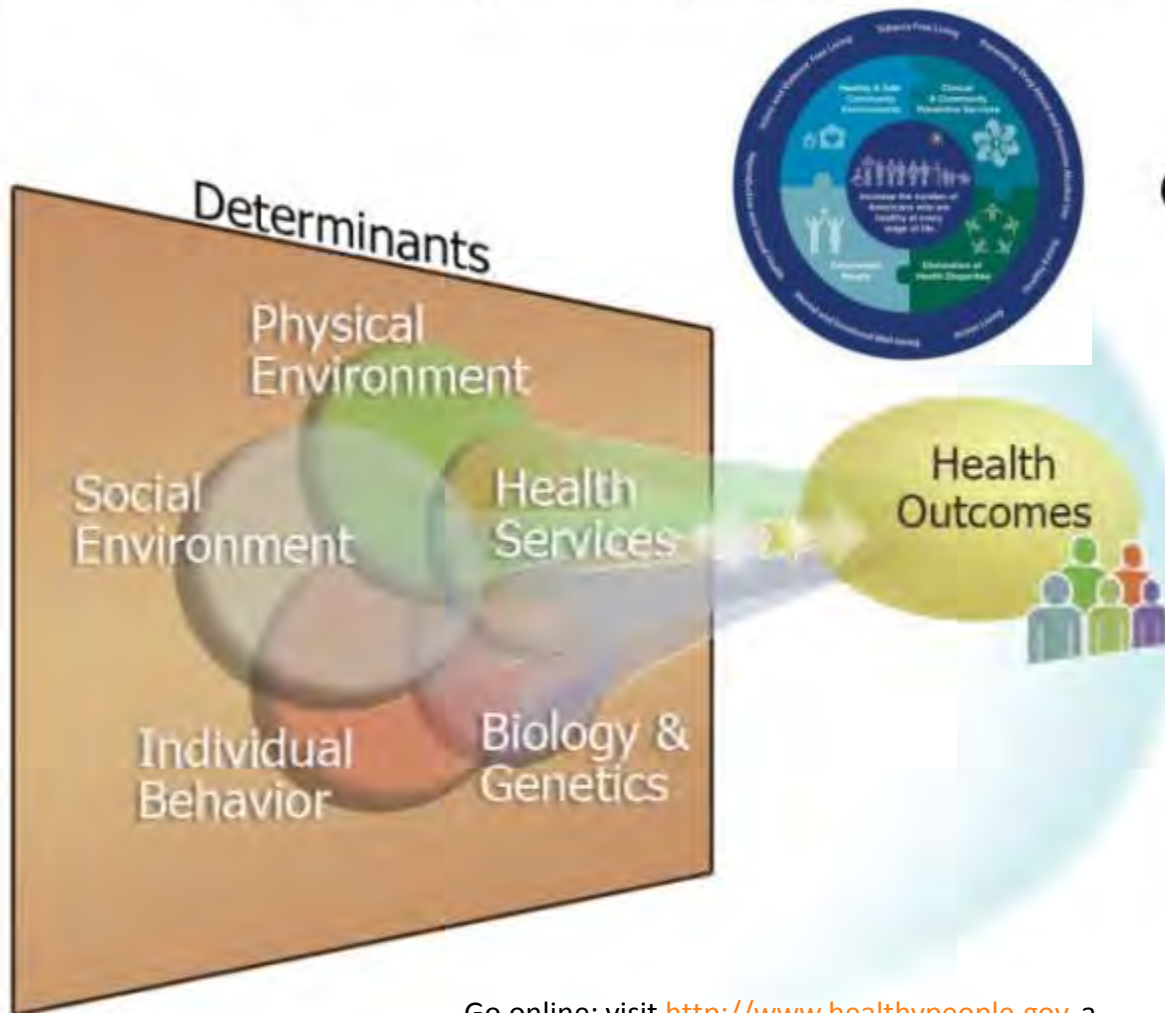


Why SHIP Matters

- ▶ **“Bridge” between National Prevention Strategy and community prevention strategy**
 - ▶ **Resource for communicating common messages to the public and system partners**
 - ▶ **Aligns benchmarks for measuring health improvement(national, state, regional, local)**
 - ▶ **Provides framework for funding decisions**
 - ▶ **Promotes collective impact of health improvement efforts of system partners**
- 

Healthy People 2020

A society in which all people live long, healthy lives

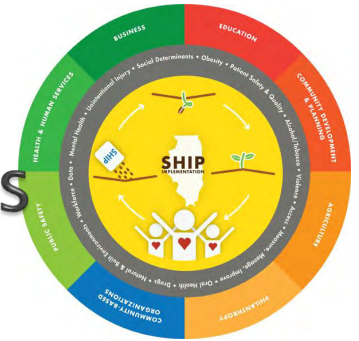


Overarching Goals:

- Attain high quality, longer lives free of preventable disease, disability, injury, and premature death.
- Achieve health equity, eliminate disparities, and improve the health of all groups
- Create social and physical environments that promote good health for all.
- Promote quality of life, healthy development and healthy behaviors across all life stages.

Go online: visit <http://www.healthypeople.gov>, a user-centered Web site that provides a platform to learn, collaborate, plan, and implement strategies to reach the 2020 objectives

Next Steps SHIP ICC Strategies



- ▶ Strengthen support from state government
- ▶ Continue outreach and awareness campaigns, including “video challenge” mini grant
- ▶ Expand on policy agendas and measurement indicators
- ▶ Provide specific guidance for stakeholders about how they can use policy to align their work with the SHIP

Video Challenge Mini-Grant

- ▶ Coming soon: A video challenge mini-grant program encouraging organizations and individuals to tell their SHIP related stories and receive small awards to continue their work.
- ▶ Topics:
 - What's your SHIP story?
 - What's your SHIP priority area?
 - We're a Public Health Stakeholder!
- ▶ Formal announcement with final details expected in October.

What You Can Do

- ▶ Learn more about the SHIP at idph.state.il.us/ship/icc, download the Implementation report from WeChooseHealth.illinois.gov, and spread the word in your organizations and coalitions
- ▶ Keep an eye out for SHIP related announcements and training opportunities
- ▶ **Take our calls**

SHIP Implementation Web Site

<http://idph.state.il.us/ship/icc> (easier address coming soon)



Welcome to the Illinois State Health Improvement Plan (SHIP) Implementation Site

Learn more about SHIP Implementation on the [About](#) page.

Find tools, training, and more to help make your communities and organizations healthier on the [Resources](#) page.

Discover how projects related to the SHIP are making a difference across Illinois on the [Impact](#) page.

And find out how you can [Get Involved](#) with improving health in Illinois.

Latest Updates

Submit your entries to the [SHIP Video Challenge!](#)

New success stories from [We Choose Health](#).

Illinois awarded CMMI grant from Federal Government to improve Medicare and Medicaid in Illinois.

Upcoming Events

7/31/13 - Challenge Submission Period begins

10/31/13 - Challenge Submission Period ends

You can find a complete list of upcoming meetings, trainings, and other important events on our [Calendar](#) page.

