

STATE HEALTH IMPROVEMENT PLAN (SHIP) IMPLEMENTATION

Pat Schou, SHIP Coordinating Council Co-Chair

Northern Region Action Institute

September 19, 2013

What is the Illinois SHIP?

- Lists priorities and strategies for health status and public health system improvement in Illinois
- Updated periodically by statute; next one due in 2016
- Most recent version created in 2010
- State initiative – all counties, organizations, payers, policy makers and providers work together to improve overall health of Illinois residents



SHIP Vision

Optimal physical, mental and social well-being for all people in Illinois through a high-functioning public health system comprised of active public, private and voluntary partners.

SHIP Public System Priorities

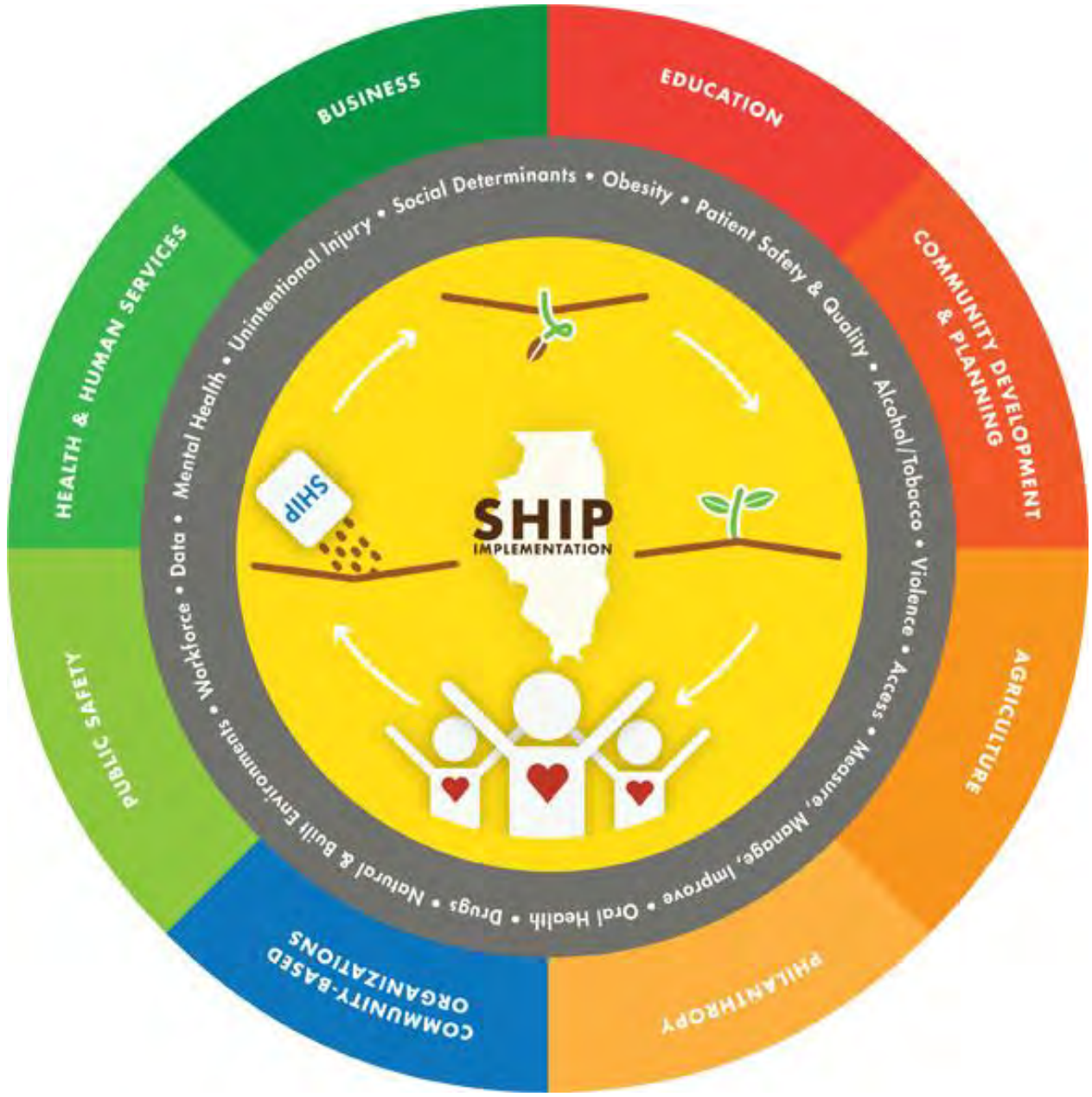
- 1) Improve Access to Health Services
- 2) Enhance Data and Information Technology
- 3) Address Social Determinants of Health and Health Disparities
- 4) Measure, Manage, Improve and Sustain the Public Health System
- 5) Assure a Sufficient Workforce and Human Resources

(note: System Priorities are not listed in priority order)

SHIP Priority Health Concerns

- 1) Alcohol/Tobacco
- 2) Use of Illicit Drugs/Misuse of Legal Drugs
- 3) Mental Health
- 4) Natural and Built Environment
- 5) Obesity: Nutrition and Physical Activity
- 6) Oral Health
- 7) Patient Safety and Quality
- 8) Unintentional Injury
- 9) Violence

(note: Health concerns are not ranked in priority order.)



SHIP Implementation Plan

- Broader SHIP implementation plan, authored by Governor-appointed Implementation Coordination Council
- Available on the web at wechoosehealth.illinois.gov and at the SHIP Implementation Web site



SHIP Implementation Web Site

<http://idph.state.il.us/ship/icc> (easier address coming soon)



Welcome to the Illinois State Health Improvement Plan (SHIP) Implementation Site

Learn more about SHIP Implementation on the [About](#) page.

Find tools, training, and more to help make your communities and organizations healthier on the [Resources](#) page.

Discover how projects related to the SHIP are making a difference across Illinois on the [Impact](#) page.

And find out how you can [Get Involved](#) with improving health in Illinois.

Latest Updates

Submit your entries to the [SHIP Video Challenge!](#)

New success stories from [We Choose Health](#).

Illinois awarded CMMI grant from Federal Government to improve Medicare and Medicaid in Illinois.

Upcoming Events

7/31/13 - Challenge Submission Period begins

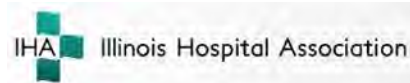
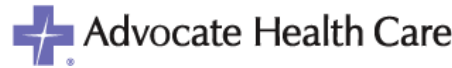
10/31/13 - Challenge Submission Period ends

You can find a complete list of upcoming meetings, trainings, and other important events on our [Calendar](#) page.

SHIP Implementation Coordination Council



IFMC-IL



Video Challenge Mini-Grant

- Coming soon: A video challenge mini-grant program encouraging organizations and individuals to tell their SHIP related stories and receive small awards to continue their work.
- Topics:
 - What's your SHIP story?
 - What's your SHIP priority area?
 - We're a Public Health Stakeholder!
- Formal announcement with final details expected in October.

We Choose Health

- State programs supported by Federal Community Transformation Grant funding
- Funds statewide and local initiatives
- Strategic Directions:
 - Tobacco Free Living
 - Active Living and Healthy Eating
 - Social and Emotional Wellness
 - Healthy and Safe Physical Environment
 - Clinical Preventive Services

Next Steps

- Strengthen support from state government
- Continue outreach and awareness campaigns, including “video challenge” mini grant
- Expand on policy agendas and measurement indicators
- Provide specific guidance for stakeholders about how they can use policy to align their work with the SHIP

Why SHIP Matters



- Concentrates efforts to make an overall difference as well as for the individual – examples: stop smoking; dental care, vaccines, seat belts...others?
- **Focus on wellness and prevention and public safety**
- **ICAHN as a stakeholder**
 - Represent the rural provider perspective
 - Revise current hospital grant projects/include SHIP priorities
 - Increase awareness within ICAHN/CAH/rural providers
 - Educate ICAHN staff and solicit their ideas on how we can support and expand SHIP project efforts – *Be healthier!*
 - Encourage policy makers to consider SHIP priorities and impact
 - Submit a video

What You Can Do

- Learn more about the SHIP at idph.state.il.us/ship/icc, download the Implementation report from WeChooseHealth.illinois.gov, and spread the word in your organizations and coalitions
- Keep an eye out for SHIP related announcements and training opportunities
- **Take our calls**

Our Future – Making a Difference

Thank you

Pat Schou

Executive Director

Illinois Critical Access Hospital Network

www.icahn.org

pschou@icahn.org

Phone: 815-875-2999

