



Complete Streets Policy and Practice

MEGAN RIECHMANN, AICP
COMMUNITY & ENVIRONMENTAL PLANNER





Learning Objectives



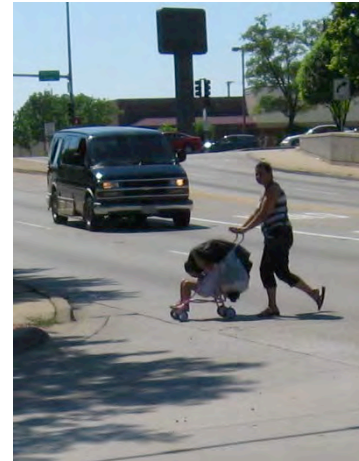
- ✓ Understand the connection between public health and transportation
- ✓ Learn the difference between Complete Streets and the traditional approach to building roads
- ✓ Identify the unique challenges that communities face, and strategies for addressing them
- ✓ Understand some of the tools and concepts that go into roadway planning and design

What does transportation have to do with public health?



Physical Activity:

- Adults need 20 min/day
- Every trip is an opportunity for physical activity
- The built environment influences our choices





Complete Streets...



...can be safely crossed and traveled upon and alongside by all users of the roadway, regardless of their age, ability or travel mode.



Complete Streets...



...can be safely crossed and traveled upon and alongside by all users of the roadway, regardless of their age, ability or travel mode.

A Complete Streets policy...

...is a commitment by a jurisdiction to accommodate all of these road users in all of their future roadway projects whenever possible.



Complete Streets...



...can be safely crossed and traveled upon and alongside by all users of the roadway, regardless of their age, ability or travel mode.

A Complete Streets policy...

...is a commitment by a jurisdiction to accommodate all of these road users in all of their future roadway projects whenever possible.

A good Complete Streets policy...

...helps to make it possible.

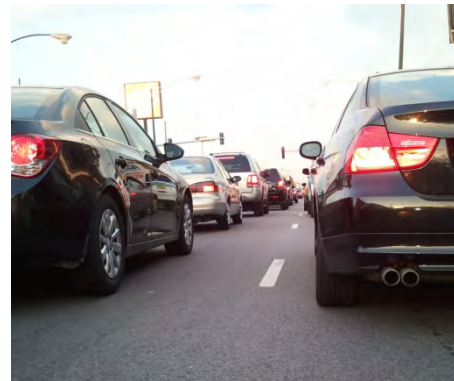
Barriers to active transportation



Facilities: Lack of sidewalks, crossings, and bikeways



Traffic Safety: Speeding cars, frequent crashes



Inconvenience:
Environment built for cars, and...



Barriers to active transportation



Distance Barrier



Walkable distance

The traditional approach to roadway design



The traditional approach to roadway design



Barriers: Nowhere to safely walk



Barriers: Nowhere to safely walk



Barriers: Inaccessible bus stops



Complete Streets solutions



Image Credit: www.completestreets.org

Complete Streets solutions





Barriers: Nowhere to safely bike



Complete Streets solutions



Traditional bike lane



Barrier protected bike lane

Barriers: Faded crosswalks



What the pedestrian sees



What the driver sees



Complete Streets solutions





Barriers: Lack accessible curb ramps



The Air Quality Connection



- Short Trips

- Substitution of cycling for driving for short trips has the potential to reduce gasoline demand up to nearly 34.9% of current domestic oil consumption (Higgins, et al., 2005)

- Trip Distance in miles (2009)

- ✦ This table illustrates the 30-40-50 trip distance concept: 30% of trips are a mile or shorter, 40% are two miles or shorter and 50% are three miles or shorter

Mileage	Percent
1 mile or less	28%
1.1 – 2 miles	13%
2.1 – 3 miles	9%
3.1 – 4 miles	6%
4.1 – 5 miles	7%
More than 5 miles	37%

Driving a car 1 mile = 423 grams CO₂

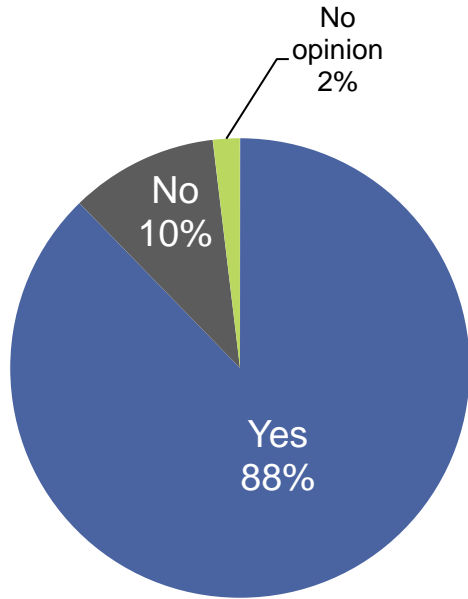
The Air Quality Connection



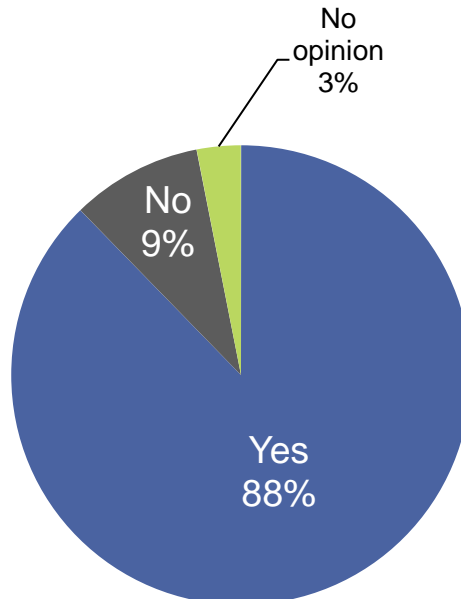
- **Commuting**

- During its lifetime each car produces 1.3 billion cubic yards of polluted air and scatters 40 pounds of worn tire particles, brake debris and worn road surface into the atmosphere.
 - Bicycling significantly reduces transportation emissions while also reducing traffic congestion and the need for gasoline/oil. The total number of pounds of pollutants emitted per year is:
 - ✦ 0.97 lbs/mile for passenger cars
 - ✦ 1.21 lbs/mile for light trucks
-

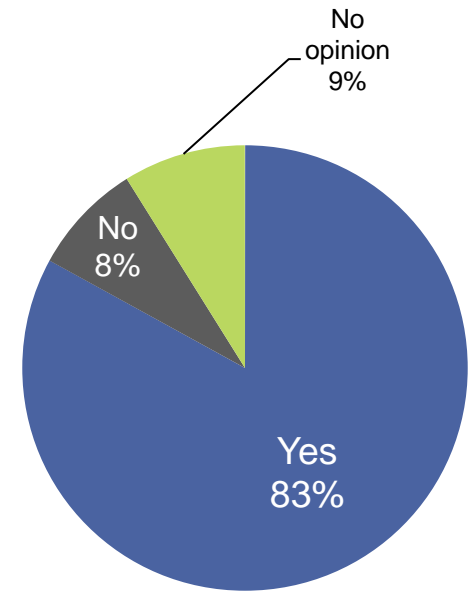
Public Opinion



Swansea



Waterloo



Columbia

Do you think your city should consider non-motorized transportation (i.e. walking & biking) a priority?

Why policy?

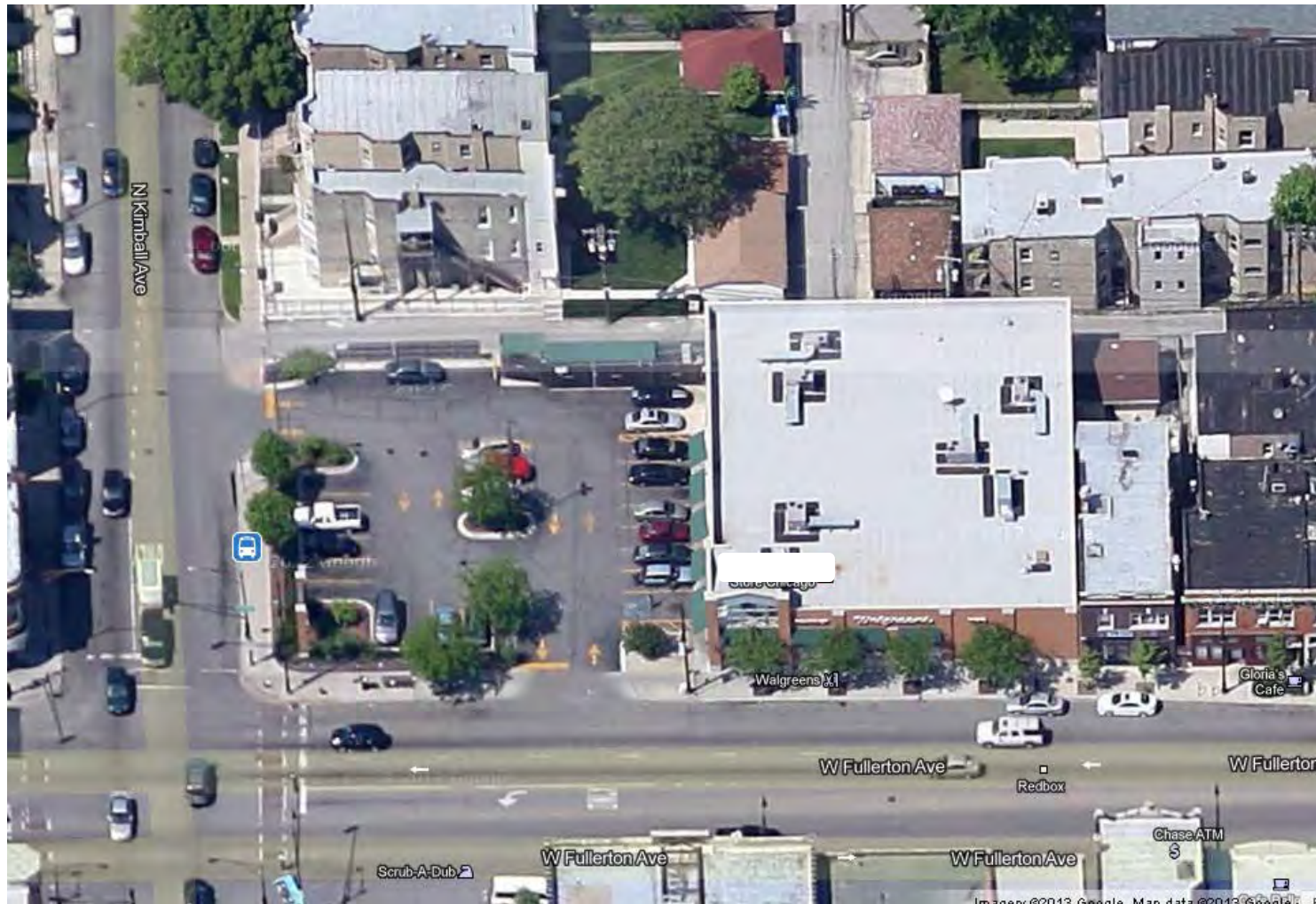


- Changes the rules that shape the built environment
- Overall ideals, not individual projects
- Outlasts the changing political climate
- Promotes systemic change

National Chain Example



National Chain Example



St. Clair County Success



St. Clair County Success



1. Competition



2. Laying a Good Foundation



3. Planning Future Phases



Questions?



- Megan Riechmann, AICP
Community & Environmental Planner
(618) 566-4451 x25
megan.riechmann@heartlandsconservancy.org

