

We Choose Health RFA Information Session

May 10, 2012

Webinar Technical Information

- **Do Not** Put Phone on Hold
- Mute your Phone
- Call in number: 888-494-4032
 - Access Code: 1478716075
- All questions must be typed in

Welcome



Presentation Outline

- *We Choose Health* Brief Overview
- Request for Application Overview
- Request for Applications Materials
- Additional Resources
- Recap of Key Dates and Deadlines
- Question and Answers

We Choose Health Overview

- Illinois Community Transformation Grant (CTG)
 - Administered by CDC and funded by the Public Health and Prevention Fund established by the Affordable Care Act.
- Goal is to use evidence and practice-based approaches to support healthy living, prevent chronic disease and improve health outcomes.
 - \$4.8 million each year for 5 years, September 2011- 2016.
 - \$3.3 million given directly to communities.
 - All grant monies must be towards implementation of our initiatives.

We Choose Health Overview

Target Area for the Illinois Department of Public Health's
Community Transformation Grant



- CDC requirements:
 - Target area excludes five largest counties: Cook, DuPage, Kane, Will, Lake
 - Must give 50% of total award to communities
 - Must give 35% of total award amount to **rural** communities
 - Implementation only, no capacity building

Statewide Implementation

Healthy Child Care

- Implementing the Nutrition and Physical Activity Self Assessment for Child Care (NAP SACC) through the Child Resource and Referral Network.

Healthy Hearts

- Increasing the use of high impact clinical services through the implementation quality improvement dashboard at federally qualified health centers.

Strategies Eligible for Funding

Smoke-Free Living (must select one strategy)

- Smoke-Free Public Places
- Smoke-Free Multi-Unit Housing

Healthy Eating and Active Living (must select one strategy)

- Coordinated School Health Model
- Baby Friendly Hospitals
- Worksite Wellness

Healthy and Safe Environment

- Complete Streets
- Safe Routes to School
- Joint Use Agreements

Structure of Grant Program

- Provides the flexibility for communities to select strategies that they are ready to implement and fit their community needs.
 - Must select at least one Smoke-Free strategy and one Healthy Eating/Active Living strategy.
- Funds must be utilized for implementation of strategies.
- Multi-year grants, first grant period is for 14 months (July 23, 2012-September 29, 2013).

RFA Information

Eligibility

- Must be legally registered entity in Illinois.
- Examples include: non-profit, hospital, school, local health department.
- 5 largest counties are ineligible: Cook, DuPage, Kane, Will and Lake.
 - No proposal covering populations in the these counties is eligible.

RFA Information

Funding and Availability

- \$3.3 million available through this grant.
- Applicant may propose up to \$300,000 dollars for funding period July 23 2012- September 29 2013.
- \$250,000 dollars for subsequent funding periods September-September through 2016.

Grant Year(s)	Maximum Award Amount
Year 1 and Year 2 (14 months from July 23, 2012 – September 30, 2013, covered under this RFA)	\$300,000
Year 3 (October 1, 2013 – September 30, 2014)	\$250,000
Year 4 (October 1, 2014 – September 30, 2015)	\$250,000
Year 5 (October 1, 2015 – September 30, 2016)	\$250,000

Funding

Funding may be used for:

- Personnel, including fringe benefits
- Consultant costs
- Supplies
- Travel
- Contractual costs
- Equipment (must be integral to a selected strategy and detailed information should be included in the budget and is subject to review and approval)
- Other costs associated with your activities to advance the strategies proposed not covered in other categories (must be detailed thoroughly in the proposed budget and is subject to review and approval).

Funding

Funding may not be used for:

- Research
- Construction (e.g., sidewalks, roads)
- Delivery of direct services to clients, or for clinical care
- Lobbying
- General management or administration costs that do not directly contribute to the initiative
- Direct fundraising, such as special events, direct mail campaigns or solicitation of donors
- Activities for inherently religious purposes
- Reimbursement for pre-award costs
- Litigation or legal costs related to the consequences of participating in CTG
- Food
- Furniture

RFA Information

Expectation to Collaborate

- Broad coalitions will be important for success.
- Will only fund 1 grantee per geographic area.
- Will post LOI's online for community groups to see who else is interested in applying.
- All applicants will need a Letter of Support from all local health departments in the area they are propose to cover.

RFA Information

Technical Assistance Providers

- WCH will fund Technical Assistance providers to support the implementation of strategies in funded communities
- A separate RFP will be posted in late June for organizations to apply to be TA providers.
- Applicants should not include capacity building technical assistance in the budget

RFA Information

Key Dates

- Friday, May 4, 2012 RFA release date
- Friday, May 18, 2012 Letter of Intent due by 5 p.m. CDT
- Friday, June 15, 2012 Proposals due by 5 p.m. CDT
- Friday, July 13, 2012* Notification of awards
- Monday-Friday, July 16-20, 2012* Contract negotiations
- Monday-Friday, July 23-27, 2012* Kickoff call with awardees

* Subject to change

Question and Answer

Request for Application

All Application Materials may be accessed through the *We Choose Health* website



Funding Opportunities Webpage

Application Materials

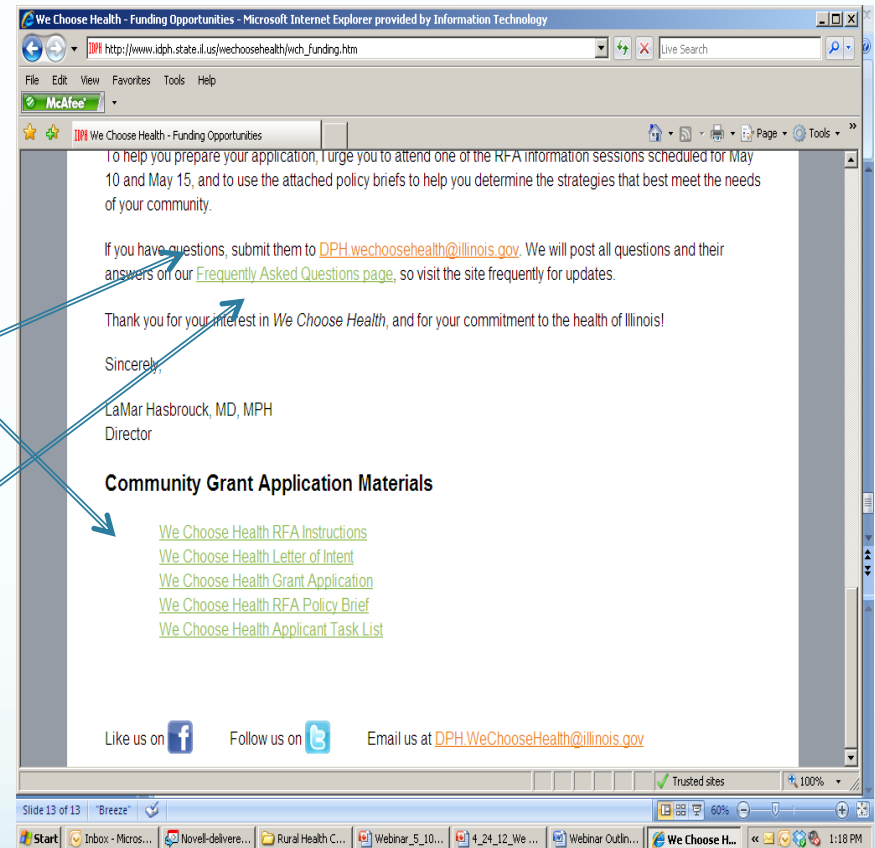
1. Information Packet
2. Letter of Intent Form
3. Application
4. Policy Briefs

Also Online:

Submit a Question

View Submitted Questions and Answers

LOI's will also be posted online



Application Materials

- Information Packet
 - Detailed description of *We Choose Health* and application
- Policy Briefs
 - Descriptions of the fundable strategies such as Coordinated School Health Model, Complete Streets includes outside resources
- Letter of Intent Form and Application Form
 - Electronically fill-able forms

Resources

- www.WeChooseHealth.Illinois.gov
- Policy Briefs
- CDC website

Questions and Answers



Next Steps

- Please submit questions to DPH.WeChooseHealth@Illinois.gov
- Deadline to submit questions June 11, 2012
- Check *We Choose Health* website for updates and to access these webinars
- LOI Deadline May 18, 2012 at 5pm Central Time submit to DPH.WeChooseHealth@Illinois.gov