

Illinois Health Facilities Planning Fund (0238) Summary

Task Force on Health Planning Reform
May 10, 2008

Health Facilities Planning Fund (0238)

1

Financial History (in \$1,000s)

Fiscal Year	Expenditures Actual	Appropriation Authority Actual	Revenues
1988	254.6	387.2	974.3
1989	546.2	624.3	1,003.3
1990	592.9	655.5	860.6
1991	761.2	806.7	1,350.6
1992	679.5	843.0	1,074.3
1993	1,072.5	1,185.0	1,396.4
1994	1,369.1	1,600.0	1,448.7
1995	1,526.6	1,800.0	1,792.2
1996	1,331.7	1,800.0	859.7
1997	857.8	1,500.0	1,381.5

Health Facilities Planning Fund (0238)

2

Financial History (in \$1,000s)

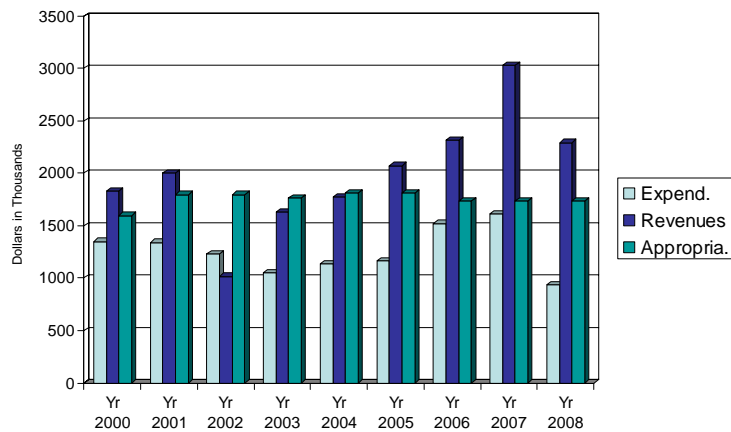
Fiscal Year	Expenditures Actual	Appropriation Authority Actual	Revenues
1998	1,175.7	1,500.0	1,867.7
1999	1,279.4	1,490.0	1,927.5
2000	1,350.0	1,597.3	1,830.7
2001	1,341.0	1,796.7	2,001.5
2002	1,233.8	1,798.5	1,017.7
2003	1,048.3	1,767.5	1,631.9
2004	1,137.4	1,809.6	1,775.4
2005	1,164.7	1,809.1	2,073.1
2006	1,521.9	1,734.5	2,318.0
2007	1,615.0	1,734.5	3,029.7
2008 (Feb. 2008)	937.1	1,734.5	2,293.6

Health Facilities Planning Fund (0238)

3

History of Revenues, Appropriation Authority and Expenditures

(All numbers are in thousands rounded to the nearest hundred)



Health Facilities Planning Fund (0238)

4

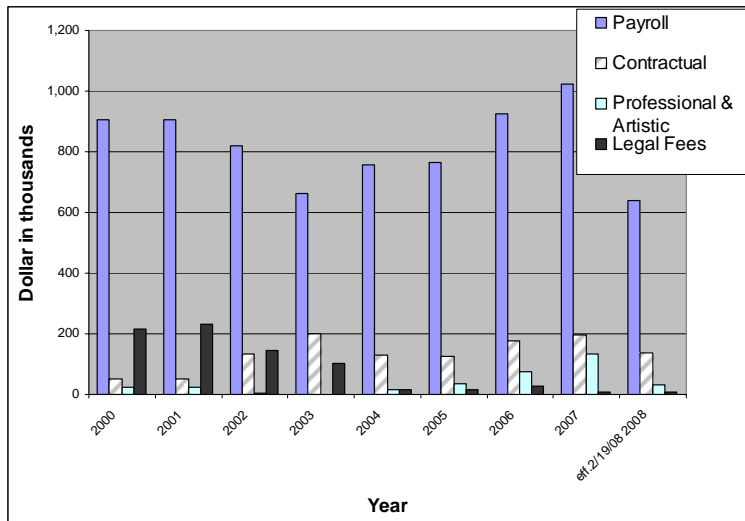
Expenditure History

Fiscal Year	Total Expenditures (\$)	Fiscal Year	Total Expenditures (\$)
1988	254,564	1998	1,175,658
1989	546,176	1999	1,279,431
1990	592,869	2000	1,350,001
1991	761,172	2001	1,340,979
1992	679,458	2002	1,233,807
1993	1,072,460	2003	1,048,333
1994	1,369,106	2004	1,137,448
1995	1,526,574	2005	1,164,707
1996	1,331,652	2006	1,521,872
1997	857,787	2007	1,615,030
		2008 (as of 2/19/08)	937,087

Health Facilities Planning Fund (0238)

5

Selected line items of the Budget



Health Facilities Planning Fund (0238)

6