

Week 5: January 27- February 2, 2013

ILLINOIS DEPARTMENT OF PUBLIC HEALTH



Illinois Influenza Surveillance Report

Week 5: Week Ending Saturday, February 2, 2013

Division of Infectious Diseases Immunization Section

2/7/2013

Contents

Summary.....	3
CDC Flu View.....	4
ILI Net Provider Surveillance	5
ILI Visits by Age Group.....	6
Great Lakes Naval Recruit Influenza Surveillance	7
Influenza Intensive Care Unit (ICU) Admissions and Deaths	7
Influenza Related ICU Admissions by Age Group.....	8
Laboratory Surveillance	9
Viral Resistance	9
Institutional Influenza Outbreaks Reported.....	10
IDPH, Immunization Section Regional Map	11
Weekly Viral Subtype	12
Resources.....	13

Summary

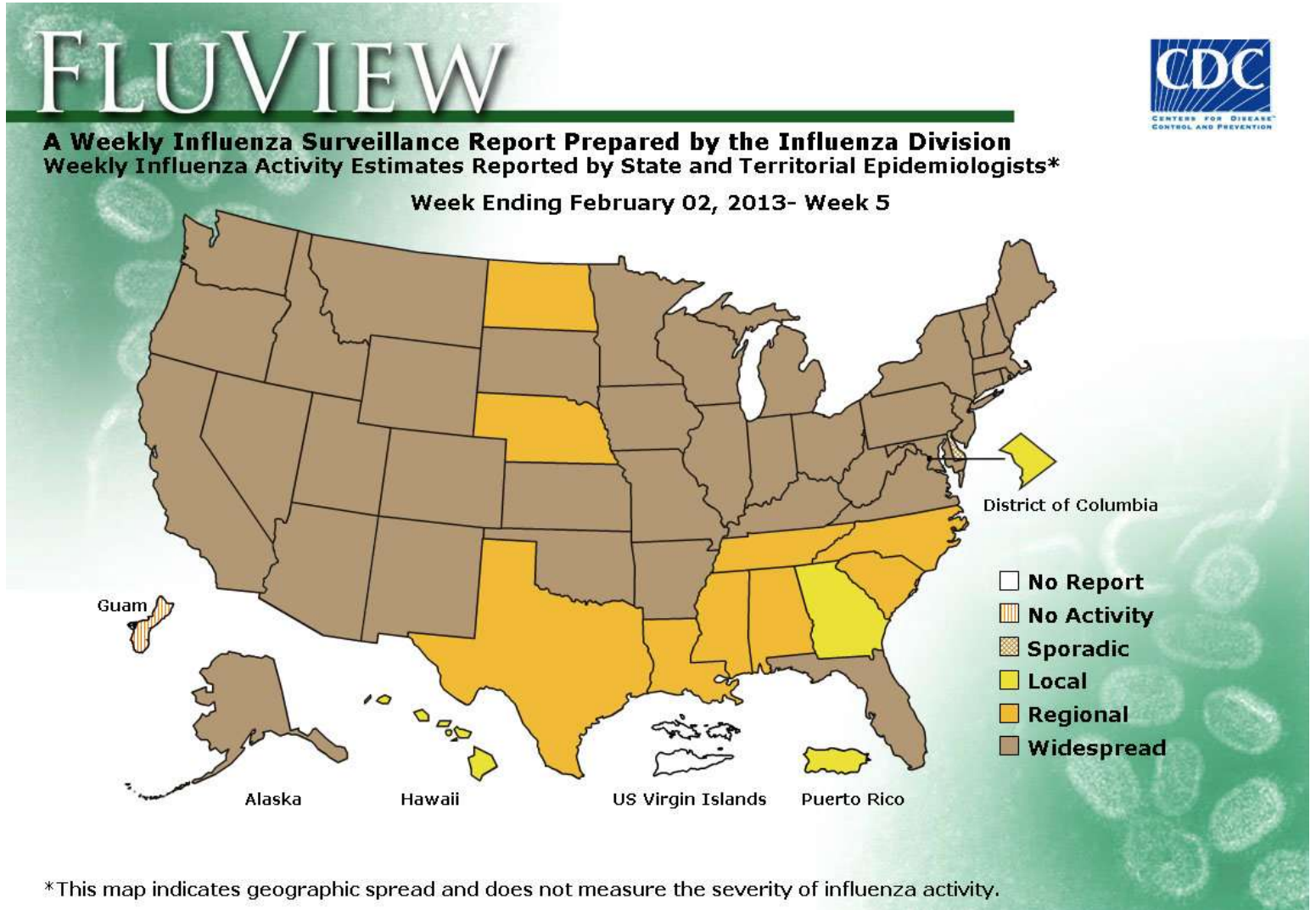
- During the Centers for Disease Control and Prevention surveillance week five, the proportion of outpatient visits for influenza-like illness (ILI)¹ reported by ILI Net sentinel providers in Illinois remains unchanged at 3.9%.
- The influenza (flu) activity level (geographic spread of influenza) for Illinois was **“WIDESPREAD”** based on CDC criteria for week ending February 2, 2013.
- Febrile Respiratory Illness (FRI) surveillance² at Naval Recruit Training Command, Great Lakes was **at or below expected value**.
- For the week ending February 2, 2013 12 specimens were tested for Influenza by Illinois Department of Public Health Laboratory, 4 (33%) were positive for influenza. Of the 4 Isolates, 3 were Influenza (A) Unable to subtype (75%), and 1 was Influenza B (25%).
- For the week ending February 2, 2013, 16 influenza related Intensive Care Unit (ICU) admissions and 1 death were reported. Total provisional number of ICU admissions and deaths for the 2012-13 Influenza season up to week ending February 2, 2013 are 608 and 84 respectively.
- No influenza-associated pediatric death was reported for the week ending February 2, 2013.
- For the week ending February 2, 2013, six institutional influenza outbreaks were reported.

¹ ILI “Influenza like Illness” is defined as fever \geq 100°F and cough and/or sore throat.

² FRI surveillance is ongoing at 8 U.S. military basic training centers, representing all service branches. FRI Rate Status is classified into one of 3 categories:

1. At or below expected value (expected value shown as dashed line)
2. Moderately elevated
3. Substantially elevated

CDC Flu View



*This map indicates geographic spread and does not measure the severity of influenza activity.

No activity: No laboratory confirmed cases of influenza and no reported increase in cases of influenza like illness (ILI).

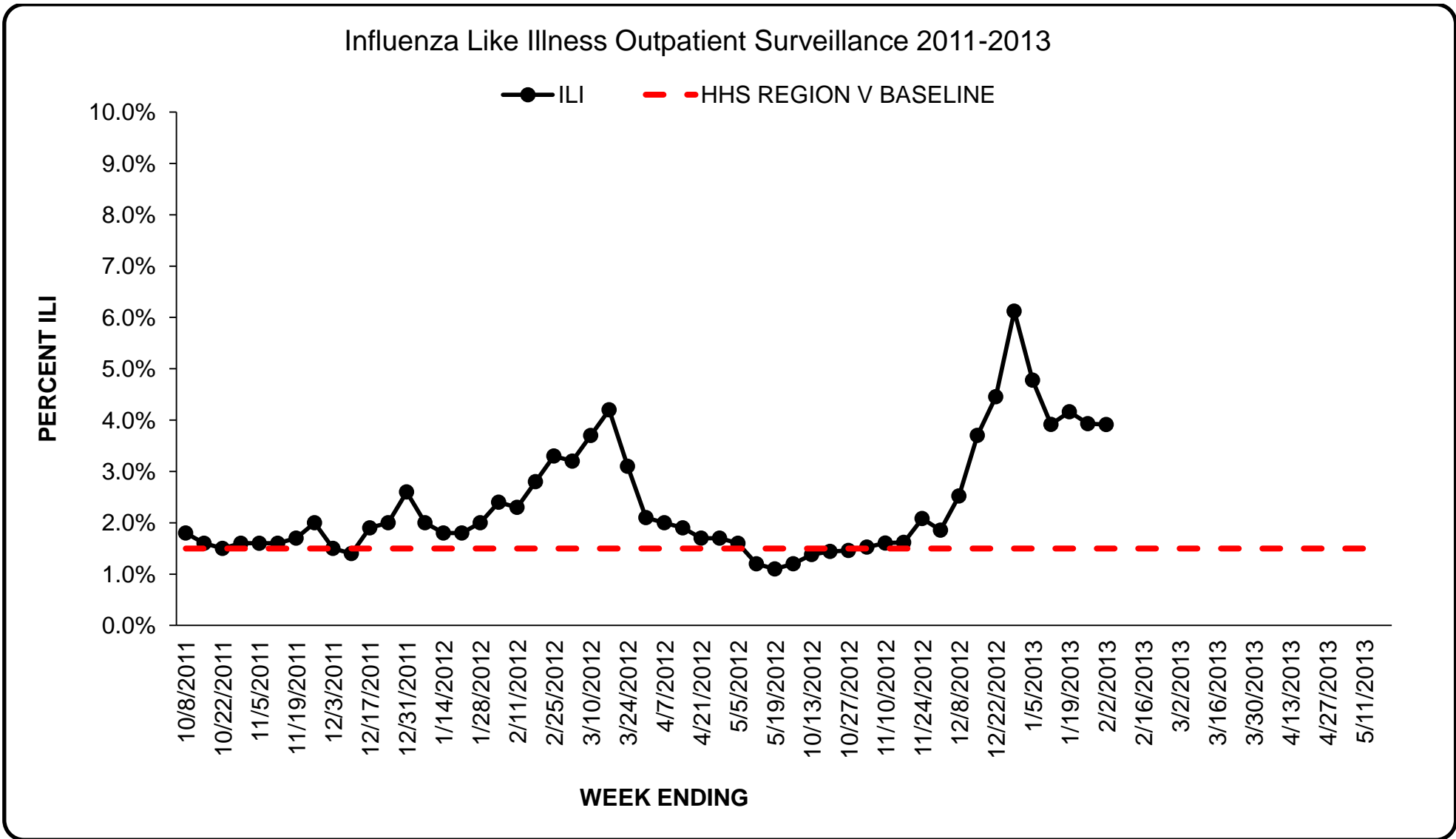
Sporadic: Small numbers of laboratory confirmed influenza cases or a single laboratory confirmed influenza in a single region of the state.

Local: Outbreaks of influenza or increases in ILI and recent laboratory confirmed influenza in a single region of the state.

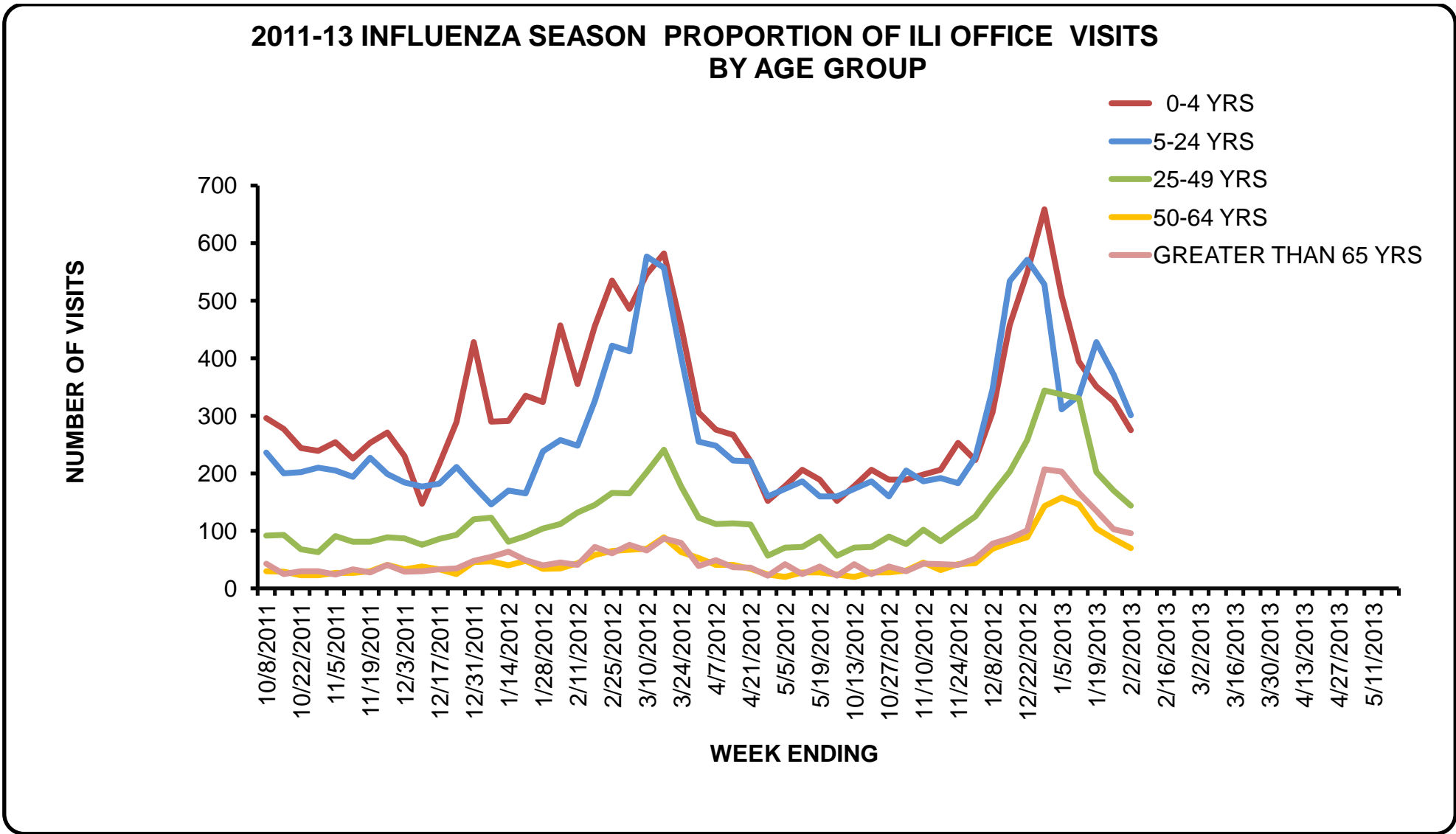
Regional: Outbreaks of influenza or increases in ILI and recent laboratory confirmed influenza in at least two but less than half the regions of the state.

Widespread: Outbreaks of influenza or increases in ILI cases and recent laboratory confirmed influenza in at least half the regions in the state.

ILI Net Provider Surveillance



ILI Visits by Age Group



Great Lakes Naval Recruit Influenza Surveillance

Febrile Respiratory Illness (FRI) surveillance³ at Naval Recruit Training Command, Great Lakes was **at or below expected value** for week ending February 2, 2013. For more information visit <http://www.med.navy.mil/sites/nhrc/geis/Pages/default.aspx>

Influenza Intensive Care Unit (ICU) Admissions and Deaths

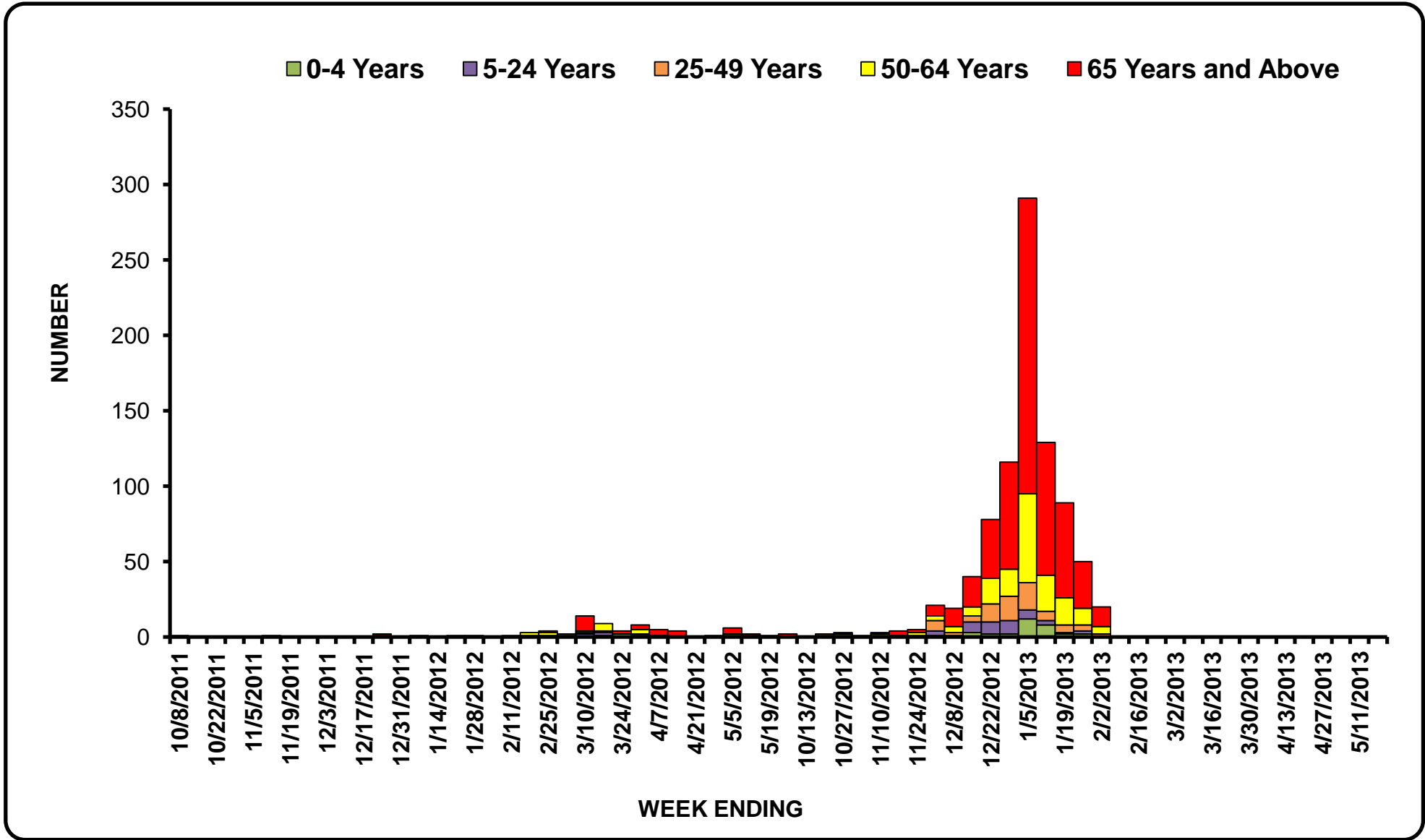
For the week ending January 26 2013, 16 influenza related Intensive Care Unit (ICU) admissions and one death were reported. Total provisional ICU admissions and deaths for the 2012-13 Influenza season up to week ending February 2, 2013 are 608 and 84 respectively.

Year	Week No	Admissions	Deaths
2013	1	127	19
2013	2	92	17
2013	3	52	8
2013	4	25	5
2013	5	16	1
Total (Provisional) for 2012-13 Season up to week ending February 2, 2013	-	608	84

³ FRI surveillance is ongoing at 8 U.S. military basic training centers, representing all service branches. FRI Rate Status is classified into one of 3 categories:

4. At or below expected value (expected value shown as dashed line)
5. Moderately elevated
6. Substantially elevated

Influenza Related ICU Admissions by Age Group



Laboratory Surveillance

During week five, of the 12 specimens tested for Influenza by Illinois Department of Public Health Laboratory, 4 (33%) were positive. Three of the four isolates (75%) were Influenza A untypeable and 1 (25%) was Influenza B. For more information about viruses circulating in Illinois visit

- ACL Clinical Laboratory Respiratory Panel: <http://www.acllaboratories.com/>
- St Louis Children’s Hospital Clinical Laboratory Respiratory Panel: <http://www.stlouischildrens.org/health-care-professionals/clinical-laboratories>

Year	Week	A (H1)	2009(A)H1N1	A (H3)	A(Unable to subtype)	A(Sub typing not performed)	B	Total # Tested	% Positive
2013	1	0	0	4	0	0	0	5	80%
2013	2	0	1	11	0	0	0	14	86%
2013	3	0	0	7	0	0	0	10	70%
2013	4	0	0	6	0	0	0	8	75%
2013	5	0	0	0	3	0	1	12	33%

Viral Resistance

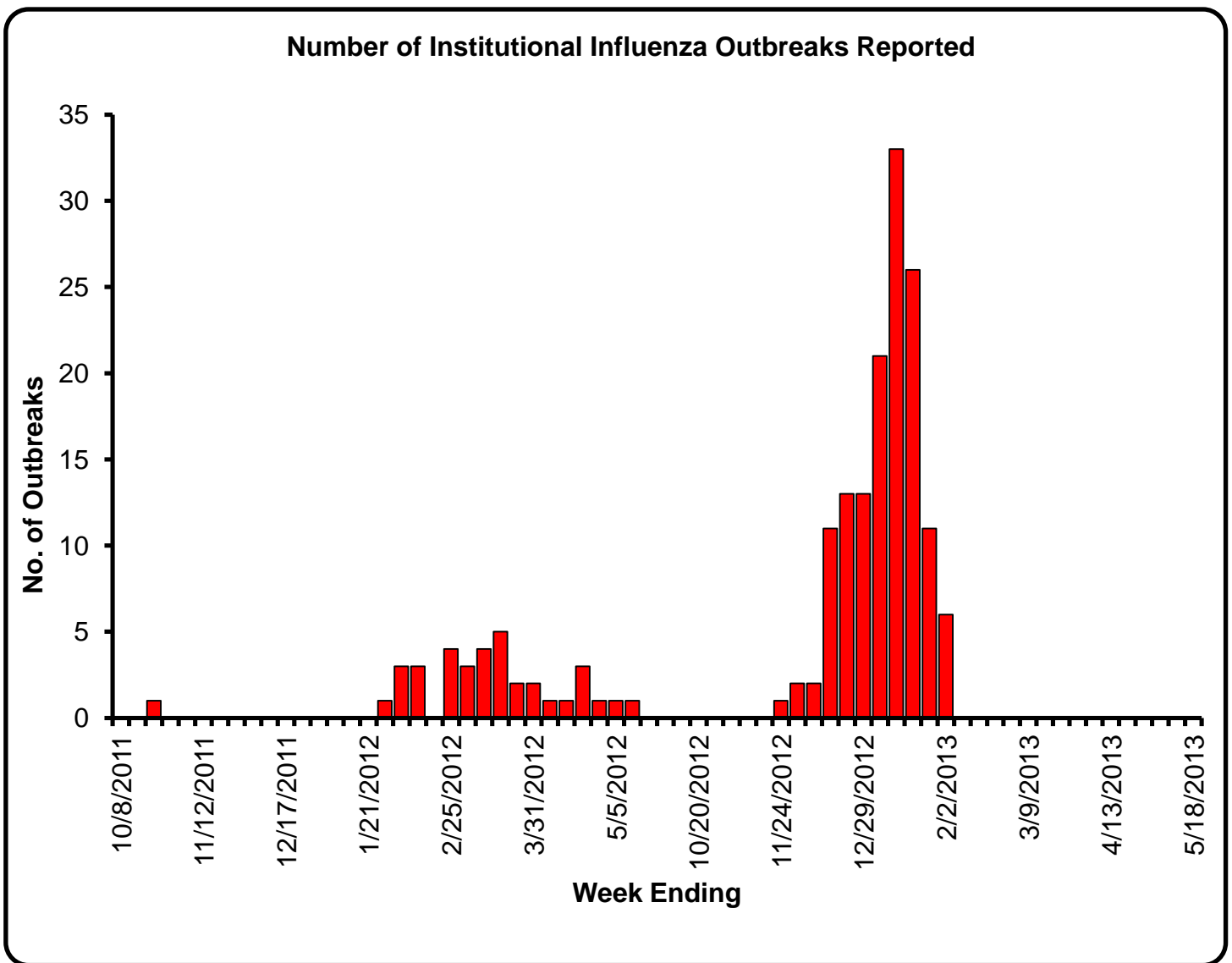
The majority of currently circulating influenza viruses are susceptible to the neuraminidase inhibitor antiviral medications oseltamivir and zanamivir; however, rare sporadic cases of oseltamivir resistant 2009 influenza A (H1N1) and A (H3N2) viruses have been detected worldwide.

Neuraminidase Inhibitor Resistance Testing Results on Samples Collected in the U.S. Since October 1, 2012				
	Oseltamivir		Zanamivir	
	Virus Samples tested (n)	Resistant Viruses, Number (%)	Virus Samples tested (n)	Resistant Viruses, Number (%)
Influenza A (H3N2)	1001	0 (0.0)	1001	0 (0.0)
Influenza B	369	0 (0.0)	369	0 (0.0)
2009 H1N1	184	1 (0.5)	80	0 (0.0)

High levels of resistance to the adamantanes (amantadine and rimantadine) persist among 2009 H1N1 and A (H3N2) viruses (the adamantanes do not have activity against influenza B viruses). Antiviral treatment as early as possible with oseltamivir or zanamivir is recommended for patients with confirmed or suspected influenza who have severe, complicated, or progressive illness; who require hospitalization; or who are at greater risk for influenza-related complications. Additional information treatment and chemoprophylaxis of influenza virus infection with antiviral agents is available at <http://www.cdc.gov/flu/antivirals/index.htm>.

Institutional Influenza Outbreaks Reported

Six institutional influenza outbreaks within Illinois were reported for week ending February 2, 2013. The facilities were located in regions 4, 5, 7, and 8.

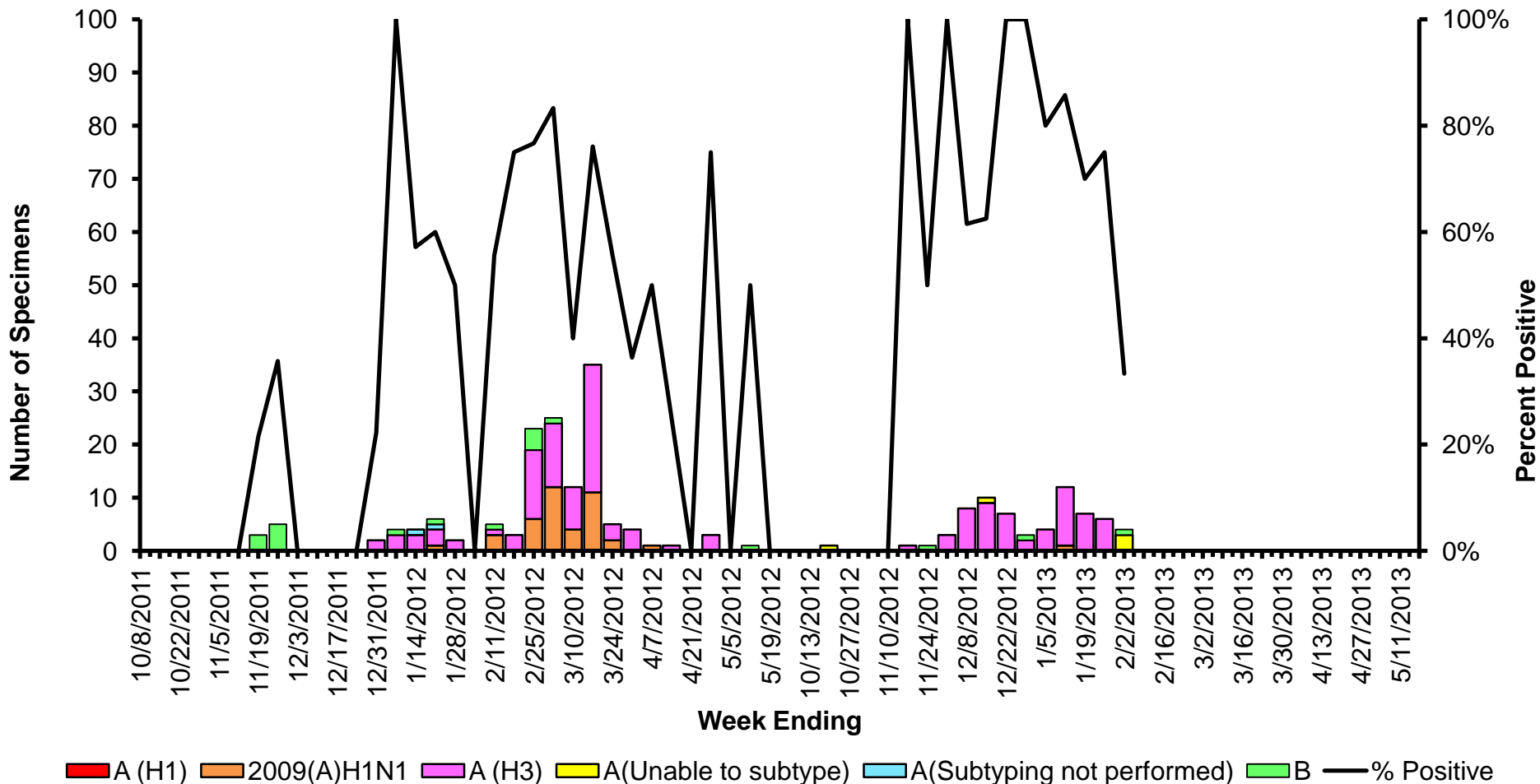


IDPH, Immunization Section Regional Map



Weekly Viral Subtype

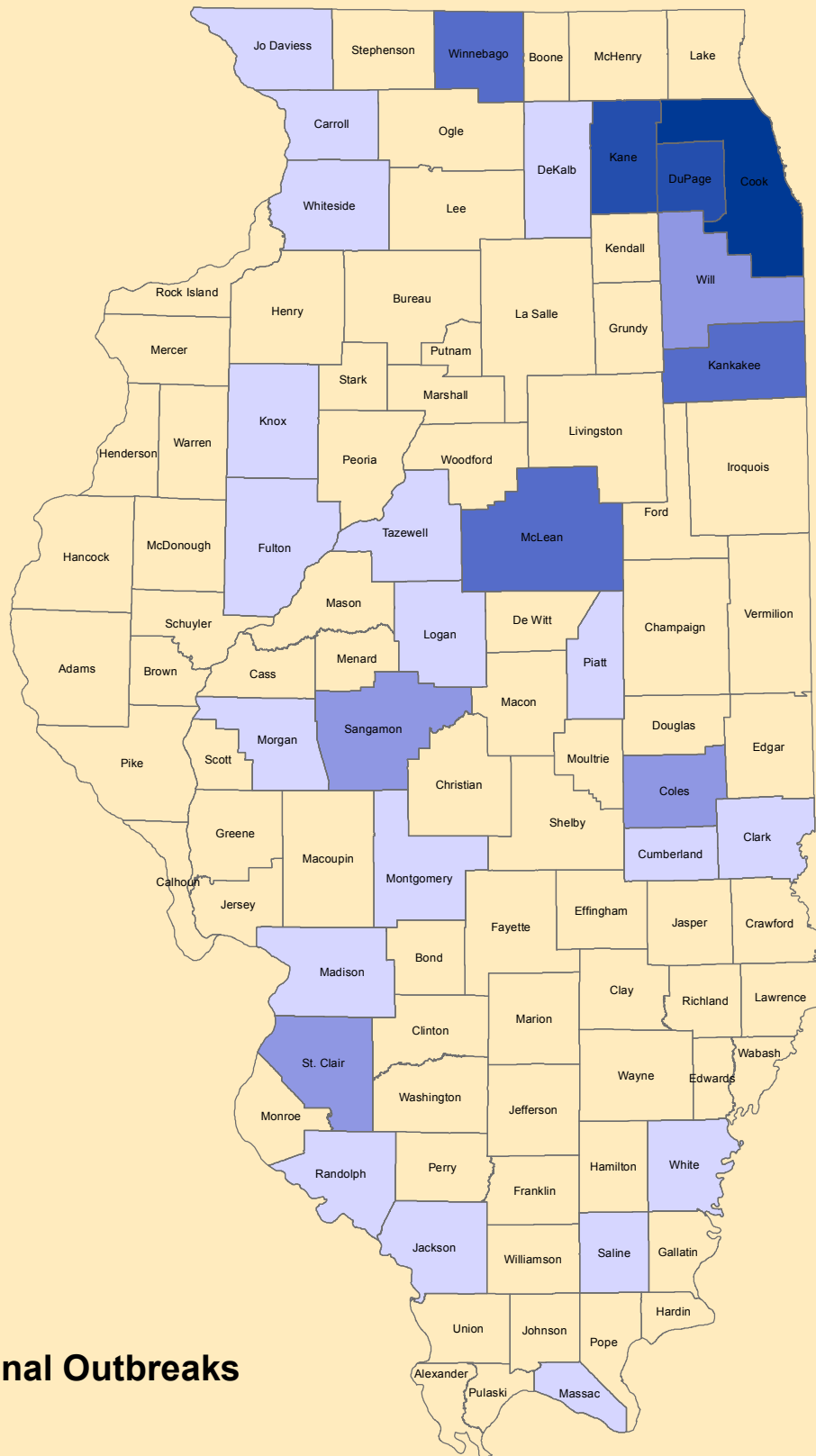
Influenza Isolates from Illinois Reported by IDPH Laboratories, 2011-2013



Resources

- Centers for Disease Control and Prevention Influenza Website: <http://www.cdc.gov/flu/>
- Immunization Action Coalition Website: <http://immunize.org/>
- IDPH Website: <http://www.idph.state.il.us/flu/surveillance.htm>

Institutional Influenza Outbreaks 2012-13 Season



No. of Institutional Outbreaks

