

Week 45: November 6-12, 2011

ILLINOIS DEPARTMENT OF PUBLIC HEALTH



# Illinois Influenza Surveillance Report

---

Week 45: Week Ending Saturday, November 12, 2011

Division of Infectious Diseases Immunizations Section

11/18/2011

## Contents

Summary.....	3
CDC Flu View.....	4
ILI Net Provider Surveillance .....	5
ILI Visits by Age Group .....	6
Great Lakes Naval Recruit Influenza Surveillance .....	7
Influenza Intensive Care Unit Admissions and Deaths.....	7
Influenza Related ICU Admissions by Age Group.....	8
Laboratory Surveillance .....	9
Viral Resistance .....	10
Influenza Outbreaks Reported in Long-Term Facilities and Nursing Homes .....	10
Weekly Viral Subtype .....	11
Resources.....	12

## Summary

- During CDC Week 45, the proportion of outpatient visits for influenza-like illness (ILI)<sup>1</sup> was 1.8% which is consistent with the proportion of outpatient visits for ILI for week 44.
- The risk of illness due to influenza viruses is low. Numerous respiratory viruses can cause ILI, and these viruses are now more prevalent than influenza viruses.<sup>i</sup>
- Based on CDC criteria, influenza activity is classified as **no activity** (see CDC FLU View Section) for week 45. This represents no change from the previous week.
- Febrile Respiratory Illness (FRI) surveillance<sup>2</sup> at Naval Recruit Training Command, Great Lakes for week 45 is **at or below expected value**.
- During week 45, none of the specimens tested by Illinois Department of Public Health Laboratory were positive for influenza A or B.
- There was 1 influenza-associated Intensive Care Unit (ICU) admission<sup>3</sup> reported for week 45.
- No influenza-associated pediatric deaths were reported for week 45.

---

<sup>1</sup> ILI "Influenza like Illness" is defined as fever  $\geq 100^{\circ}\text{F}$  and cough and/or sore throat.

<sup>2</sup> FRI surveillance is ongoing at 8 U.S. military basic training centers, representing all service branches. FRI Rate Status is classified into one of 3 categories:

1. At or below expected value (expected value shown as dashed line)
2. Moderately elevated
3. Substantially elevated

<sup>3</sup> For the purpose of diagnosis, influenza can be diagnosed by using the following test: reverse transcription polymerase chain reaction [RT-PCR], viral culture, Immunofluorescence [Direct Fluorescent Antibody (DFA) or Indirect Fluorescent Antibody (IFA) Staining], Enzyme Immuno Assay (EIA) or any rapid diagnostic test. Sensitivities of rapid diagnostic tests are approximately 50-70% when compared with viral culture or reverse transcription polymerase chain reaction (RT-PCR), and specificities of rapid diagnostic tests for influenza are approximately 90-95%. False-positive (and true-negative) results are more likely to occur when disease prevalence in the community is low, which is generally at the beginning and end of the influenza seasons. False-negative (and true-positive) results are more likely to occur when disease prevalence is high in the community, which is typically at the height of the influenza season.

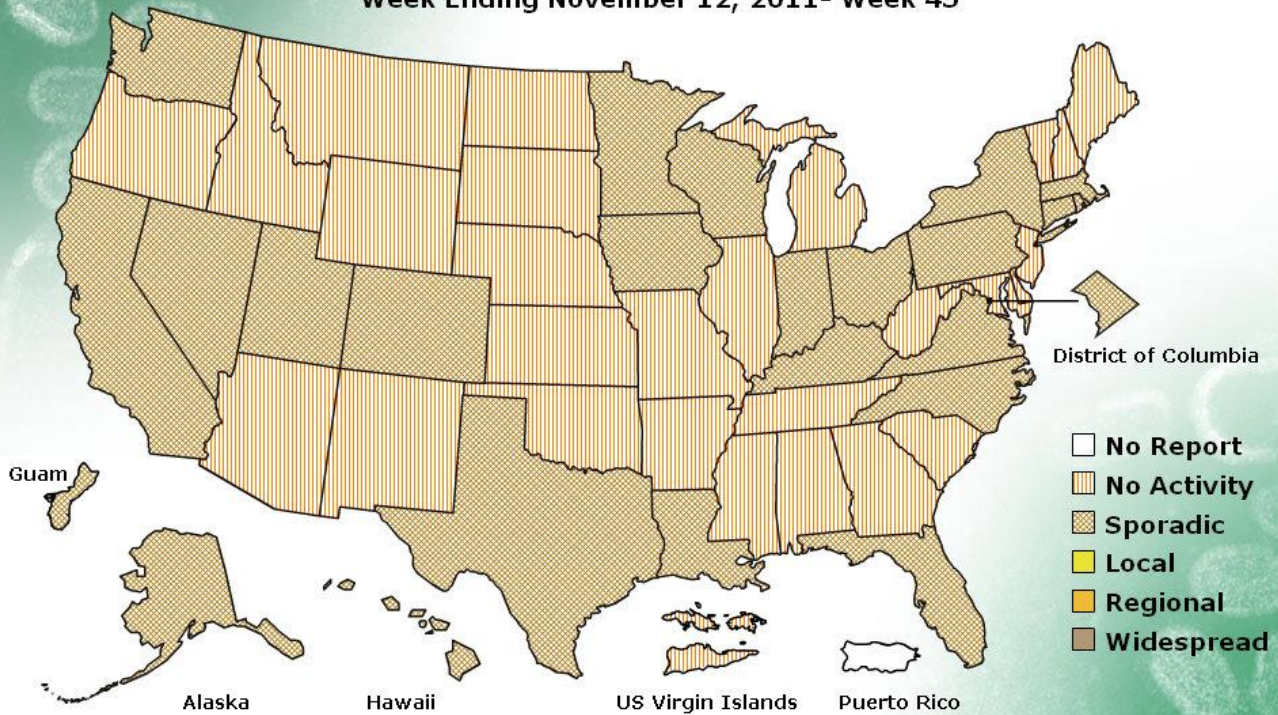
CDC Flu View

# FLUVIEW



A Weekly Influenza Surveillance Report Prepared by the Influenza Division  
Weekly Influenza Activity Estimates Reported by State and Territorial Epidemiologists\*

Week Ending November 12, 2011- Week 45



\*This map indicates geographic spread and does not measure the severity of influenza activity.

**No activity:** No laboratory confirmed cases of influenza and no reported increase in cases of influenza like illness (ILI).

**Sporadic:** Small numbers of laboratory confirmed influenza cases or a single laboratory confirmed influenza in a single region of the state.

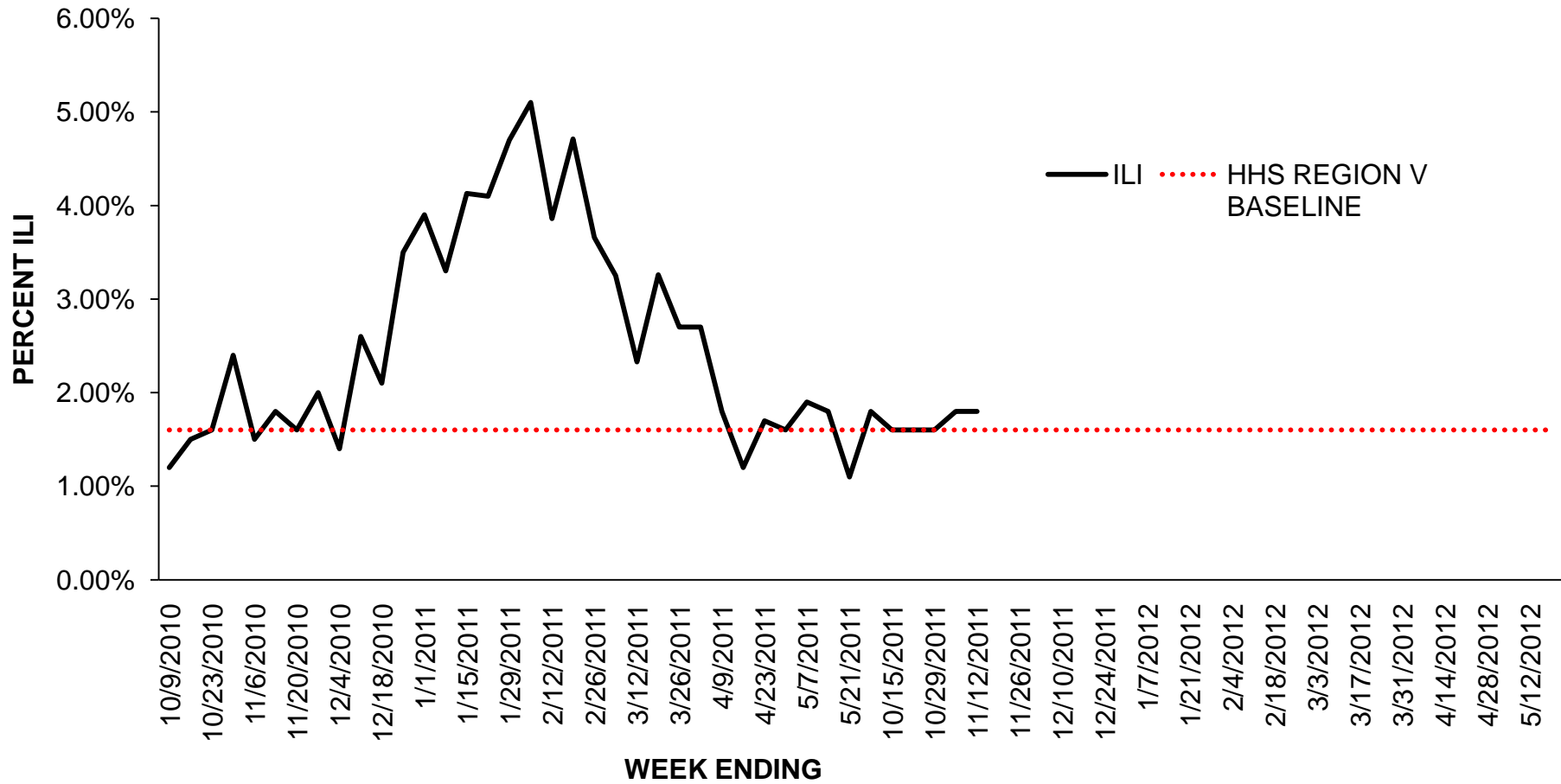
**Local:** Outbreaks of influenza or increases in ILI and recent laboratory confirmed influenza in a single region of the state.

**Regional:** Outbreaks of influenza or increases in ILI and recent laboratory confirmed influenza in at least two but less than half the regions of the state.

**Widespread:** Outbreaks of influenza or increases in ILI cases and recent laboratory confirmed influenza in at least half the regions in the state.

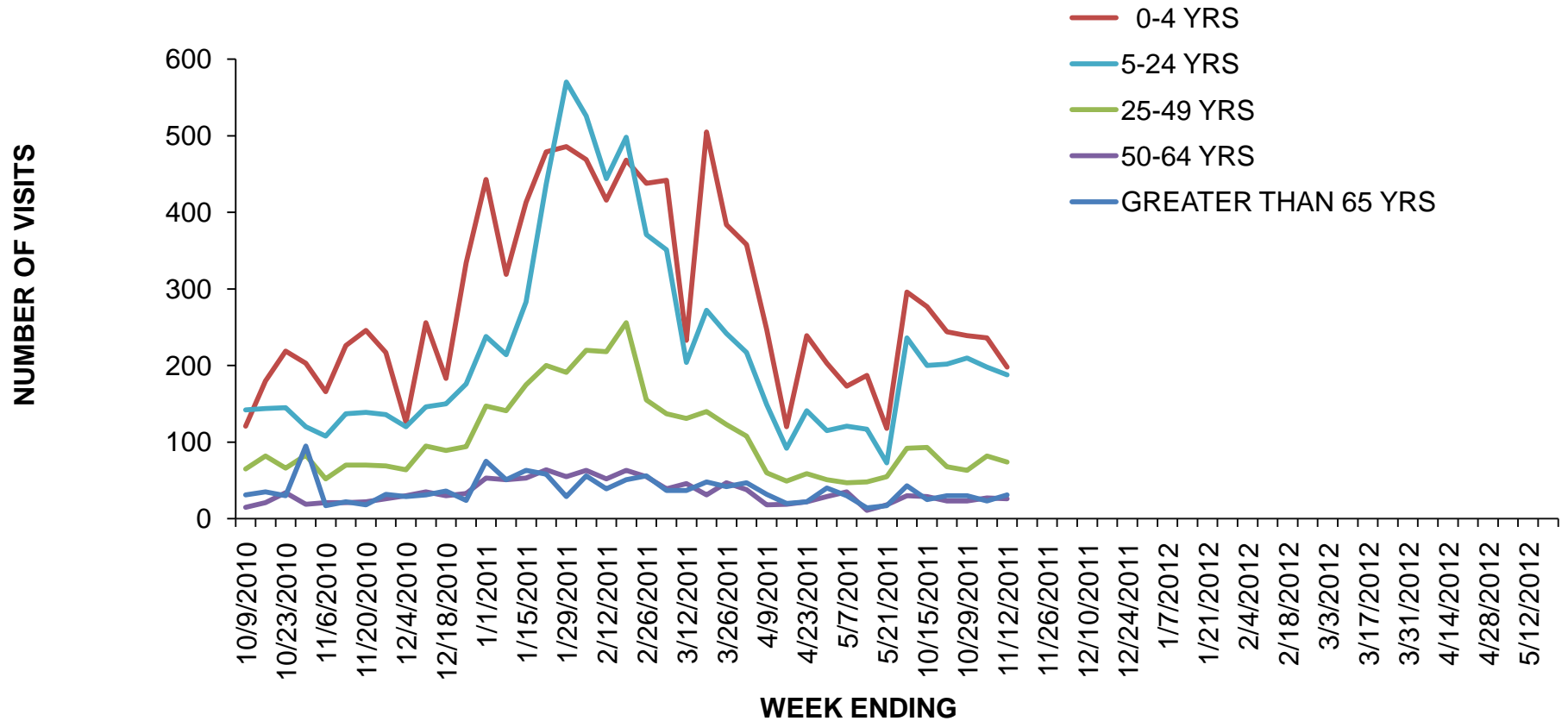
**ILI Net Provider Surveillance**

Influenza Like Illness Outpatient Surveillance 2010-2012



**ILI Visits by Age Group**

2010 -12 Influenza Season Proportion of ILI Office Visits By Age Group



### **Great Lakes Naval Recruit Influenza Surveillance**

Febrile Respiratory Illness (FRI) surveillance<sup>4</sup> at Naval Recruit Training Command, Great Lakes **at or below expected value** for week ending November 12, 2011. For more information visit <http://www.med.navy.mil/sites/nhrc/geis/Pages/default.aspx>

### **Influenza Intensive Care Unit Admissions and Deaths**

There was one influenza related ICU admission and no deaths for week ending November 12, 2011.

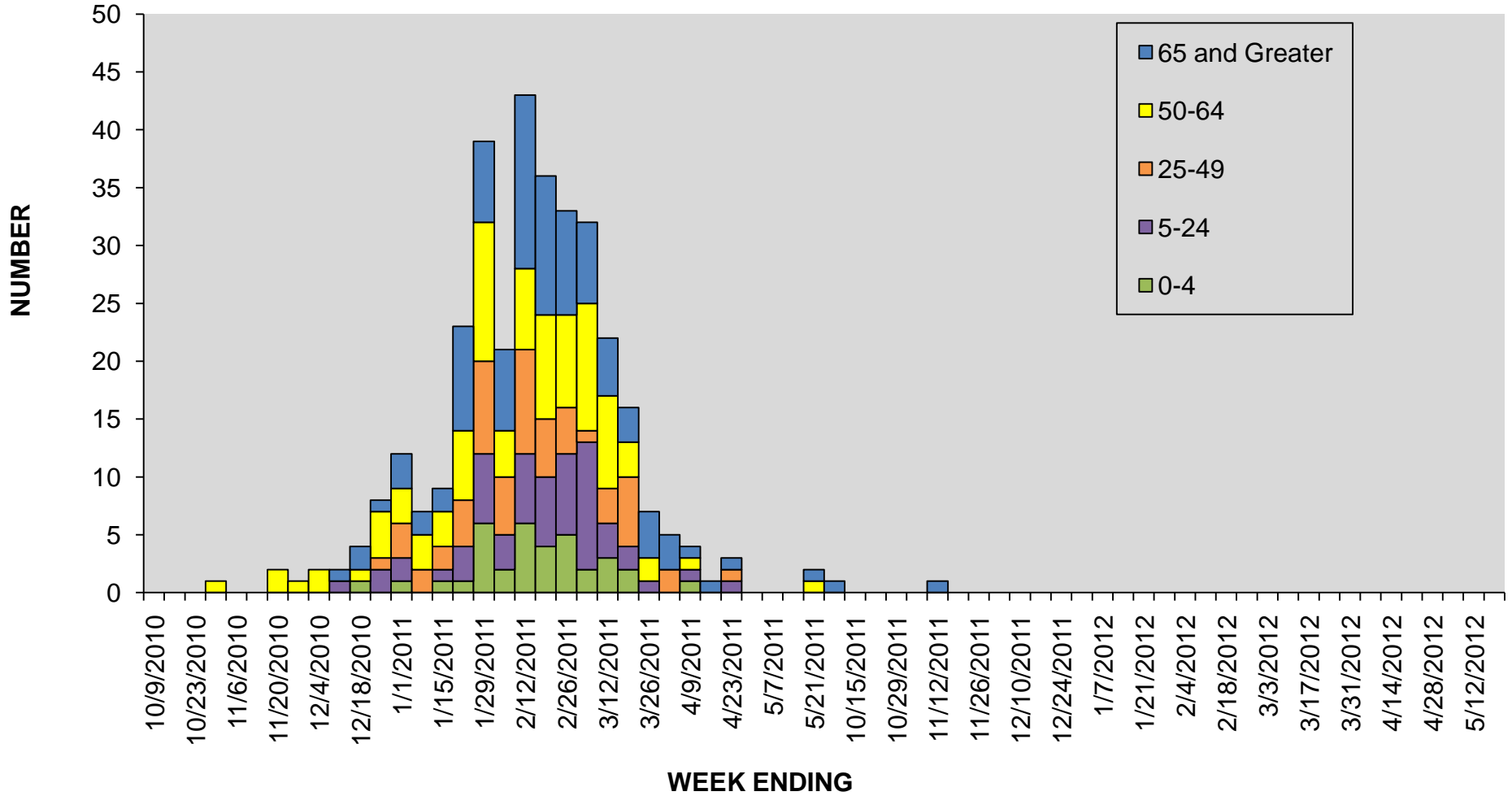
Week No	Admissions No	Deaths
42	0	0
43	0	0
44	0	0
45	1	0

---

<sup>4</sup> FRI surveillance is ongoing at 8 U.S. military basic training centers, representing all service branches. FRI Rate Status is classified into one of 3 categories:

4. At or below expected value (expected value shown as dashed line)
5. Moderately elevated
6. Substantially elevated

**Influenza Related ICU Admissions by Age Group**





**Laboratory Surveillance**

During week 45, four specimens were tested by Illinois WHO/NREVSS<sup>5</sup> collaborating laboratories in Illinois. This represents a slight decrease in testing from last week when five specimens were collected and tested. There has been no specimen which tested positive for influenza thus far this season.

Week	No of Labs Reporting	A (H1)	2009(A)H1N1	A (H3)	A(Unable to subtype)	A(Sub typing not performed)	B	Total # Tested	% Positive
42	1	0	0	0	0	0	0	10	0
43	1	0	0	0	0	0	0	8	0
44	1	0	0	0	0	0	0	5	0
45	1	0	0	0	0	0	0	4	0

<sup>5</sup> WHO/NREVSS Collaborating Laboratories WHO/NREVSS Collaborating Laboratories: For **viral surveillance** - About 80 U.S. World Health Organization (WHO) Collaborating Laboratories and 70 National Respiratory and Enteric Virus Surveillance System (NREVSS), located throughout the United States report daily or weekly the results of their testing.

**Viral Resistance**

**Neuraminidase Inhibitor Resistance Testing Results on Samples Collected Since October 1, 2011**

	Oseltamivir		Zanamivir	
	Virus Samples tested (n)	Resistant Viruses, Number (%)	Virus Samples tested (n)	Resistant Viruses, Number (%)
<b>Influenza A (H3N2)</b>	12	0 (0.0)	12	0 (0.0)
<b>Influenza B</b>	2	0 (0.0)	2	0 (0.0)
<b>Influenza A (2009 H1N1)</b>	0	0 (0.0)	0	0 (0.0)

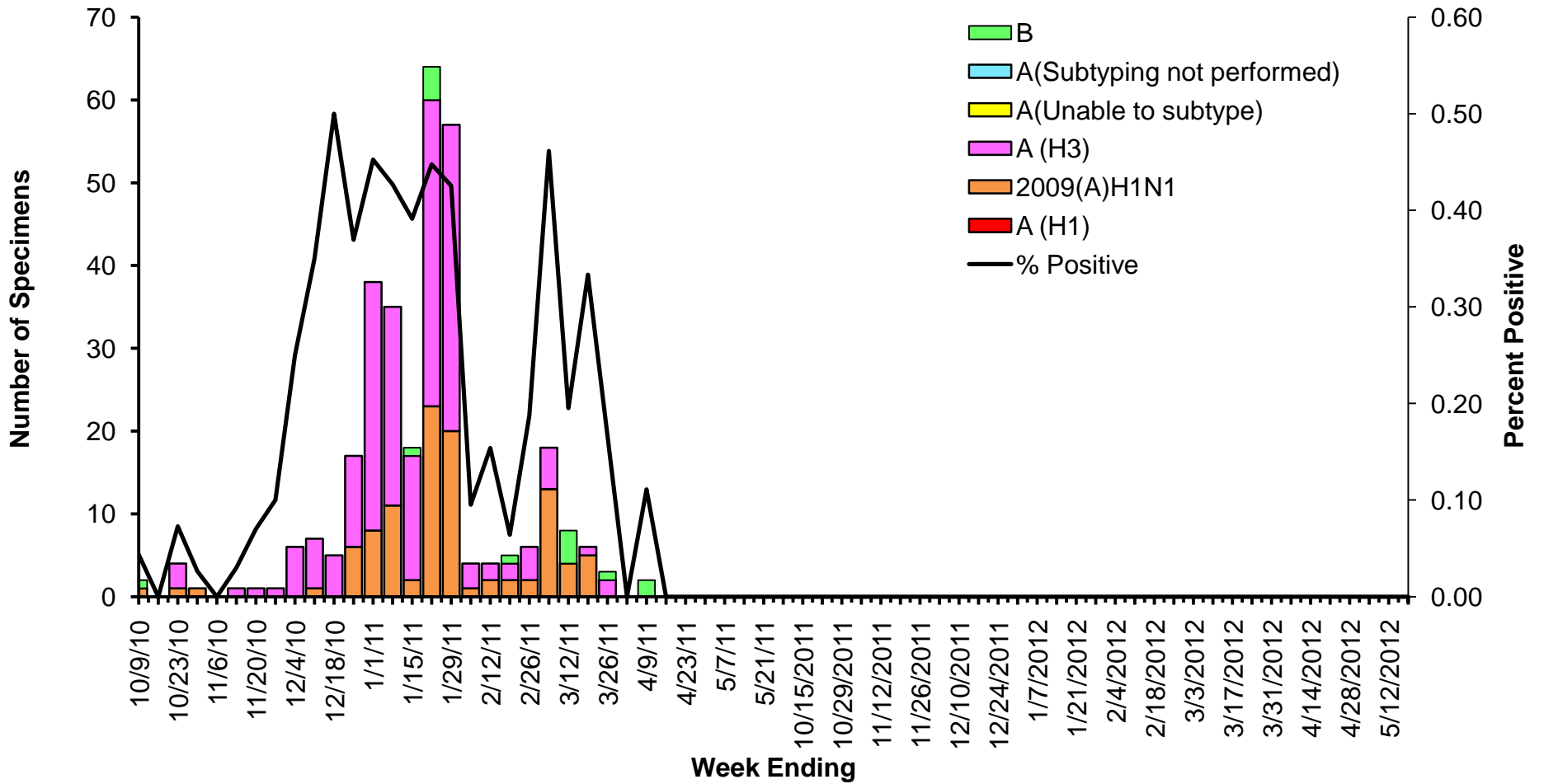
All viruses tested for the 2011-2012 season since October 1, 2011 have been susceptible to the neuraminidase inhibitor antiviral medications oseltamivir and zanamivir as were the majority of viruses tested last season; however, rare sporadic cases of oseltamivir resistant 2009 influenza A (H1N1) and A (H3N2) viruses have been detected worldwide. Antiviral treatment with oseltamivir or zanamivir is recommended as early as possible for patients with confirmed or suspected influenza who have severe, complicated, or progressive illness; who require hospitalization; or who are at greater risk for influenza-related complications. Additional information on recommendations for treatment and chemoprophylaxis of influenza virus infection with antiviral agents is available at <http://www.cdc.gov/flu/antivirals/index.htm>.

**Influenza Outbreaks Reported in Long-Term Facilities and Nursing Homes**

There were no outbreaks reported in long-term care facilities for week 45.

**Weekly Viral Subtype**

Influenza Isolates from Illinois Reported by  
WHO/NREVSS Collaborating Laboratories  
2010-2012



## **Resources**

- Centers for Disease Control and Prevention Influenza Website: <http://www.cdc.gov/flu/weekly/fluactivity.htm>
- Immunization Action Coalition Website: <http://immunize.org/>
- IDPH Website <http://www.idph.state.il.us/flu/surveillance.htm>
- ACL Clinical Laboratory Respiratory Panel <http://www.acllaboratories.com/admin/upload-area/files/2010%20Infectious%20Disease/1%20RVP%20Jun27%20-%20Oct%2016.pdf>
- St Louis Children's Hospital Clinical Laboratory Respiratory Panel <http://www.stlouischildrens.org/content/ClinicalLaboratories.htm>

---

<sup>1</sup> For more information regarding circulating respiratory viruses, see

a. <http://www.cdc.gov/surveillance/nrevss/rsv/state.html>

b. <http://www.acllaboratories.com/>

c. [www.stlouischildrens.org/content/ClinicalLaboratories.htm](http://www.stlouischildrens.org/content/ClinicalLaboratories.htm)