

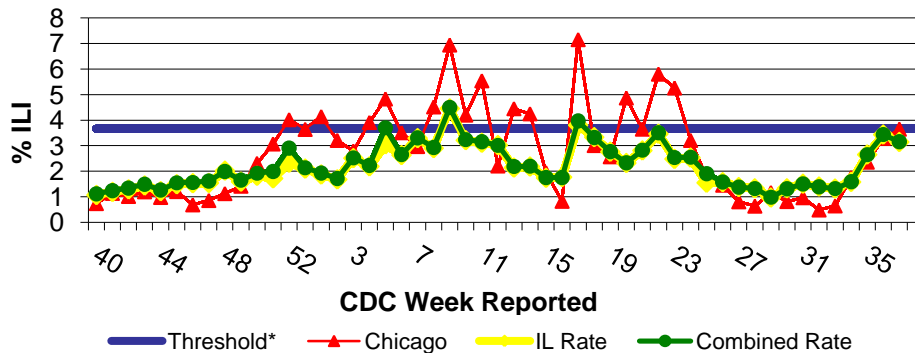
IDPH Weekly Influenza Surveillance Report

Week ending September 19, 2009¹ Influenza Activity Level: **WIDESPREAD²**

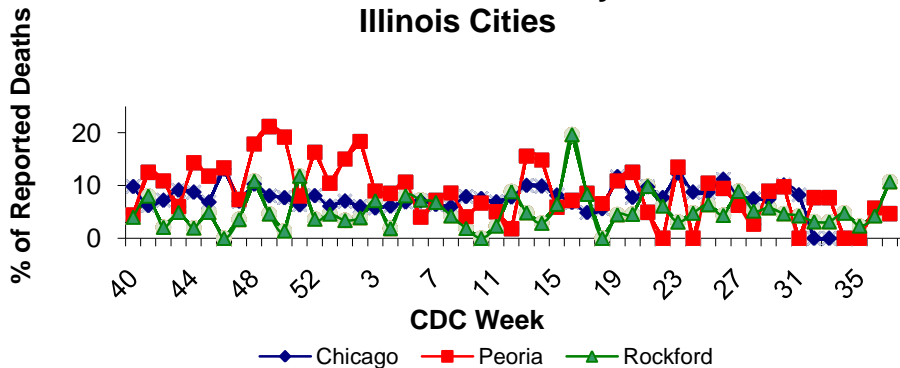


CDC Week	Sentinel Providers - %ILI	Lab Confirmed Specimens
37	3.16	31

Illinois Sentinel Provider Surveillance Network



Influenza & Pneumonia Mortality in Selected Illinois Cities



Novel Influenza A (H1N1) Virus

As of September 19, 2009, there have been 10,082 hospitalizations and 936 deaths associated with the novel H1N1 flu outbreak in the United States. Of these, 8,392 hospitalizations and 822 deaths are related to influenza and pneumonia syndrome. The remaining 1,690 hospitalizations and 114 deaths are based off influenza laboratory tests. For more information visit <http://www.cdc.gov/h1n1flu/updates/us/#totalcases>.

Illinois Sentinel Provider Data¹

Weekly data reported from participating medical practitioners attributing patient office visits to "influenza like illness" (ILI)³

• Age 0-4	213
• Age 5-24	414
• Age 25-64	272
• 65 +	20

Influenza & Pneumonia Mortality Surveillance

- Data from CDC 122 Cities Morbidity and Mortality Reporting System
- All age groups represented
- Three influenza-associated pediatric deaths were reported nation-wide and all were associated with the 2009 influenza A (H1N1) virus infection for week ending 9/19/09.

Great Lakes Naval Academy Febrile Respiratory Illness Surveillance Update

Febrile respiratory illness in military recruits at NRTC Great Lakes was reported as at or below expected value.

Laboratory Surveillance¹

- Thirty-one specimens have been reported by IDPH laboratory for week ending 9/19/09.
- Influenza A (H1) 0
- Influenza A (H3) 0
- Influenza A (unknown) 0
- Influenza B 0
- Novel Influenza A (H1N1) 31

National Influenza Surveillance

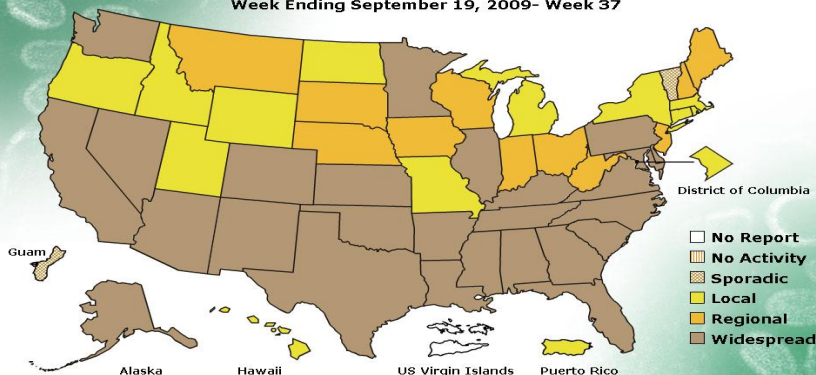
Twenty-six states reported widespread activity, 11 states reported regional activity, 12 states, the District of Columbia, and Puerto Rico reported local activity, 1 state and Guam reported sporadic activity, and the US Virgin Islands did not report.

Other References/Resources:

- Centers for Disease Control and Prevention Influenza Website: <http://www.cdc.gov/flu/weekly/fluactivity.htm>
- Immunization Action Coalition Website: <http://immunize.org/>
- IDPH Website: <http://www.idph.state.il.us/flu/surveillance.htm>

FLUVIEW

A Weekly Influenza Surveillance Report Prepared by the Influenza Division
Weekly Influenza Activity Estimates Reported by State and Territorial Epidemiologists*
Week Ending September 19, 2009- Week 37



*This map indicates geographic spread and does not measure the severity of influenza activity.

No activity: No laboratory confirmed cases of influenza and no reported increase in cases of influenza like illness (ILI).

Sporadic: Small numbers of laboratory confirmed influenza cases or a single laboratory confirmed influenza in a single region of the state.

Local: Outbreaks of influenza or increases in ILI and recent laboratory confirmed influenza in a single region of the state.

Regional: Outbreaks of influenza or increases in ILI and recent laboratory confirmed influenza in at least two but less than half the regions of the state.

Widespread: Outbreaks of influenza or increases in ILI cases and recent laboratory confirmed influenza in at least half the regions in the state.

³"Influenza like illness" is defined as fever $\geq 100^{\circ}\text{F}$ and cough and/or sore throat.

*Threshold=3.66%

¹Data in this report is provisional and will be updated weekly