

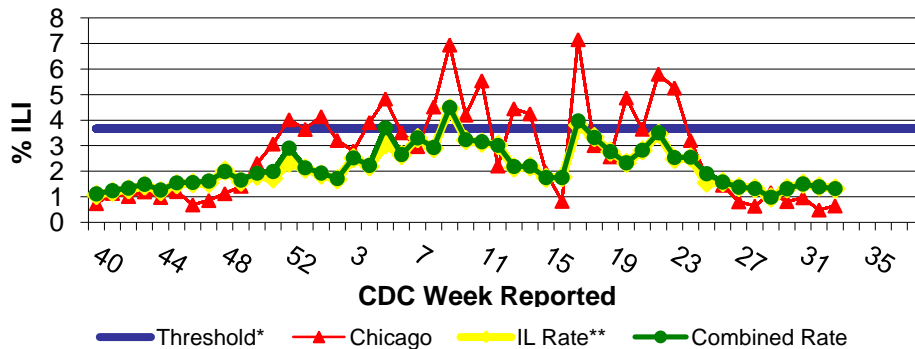
# IDPH Weekly Influenza Surveillance Report

Week ending August 22, 2009<sup>1</sup> Influenza Activity Level: **SPORADIC<sup>2</sup>**

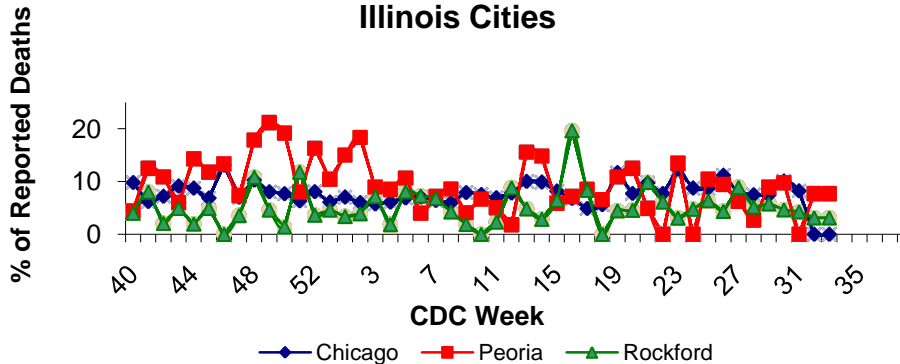


CDC Week	Sentinel Providers - %ILI	Lab Confirmed Specimens
33	1.32	18

## Illinois Sentinel Provider Surveillance Network



## Influenza & Pneumonia Mortality in Selected Illinois Cities



## Novel Influenza A (H1N1) Virus

CDC discontinued reporting of individual confirmed and probable cases of novel H1N1 infection on July 24, 2009. CDC will report the total number of hospitalizations and deaths weekly. As of August 15, 2009, there have been 8,843 hospitalizations and 556 deaths associated with the novel H1N1 flu outbreak. These have been reported from 52 states and territories, including District of Columbia, American Samoa, Guam, Puerto Rico and the US Virgin Islands. Click the following link for details: <http://www.cdc.gov/h1n1flu/update.htm>

## Illinois Sentinel Provider Data<sup>1</sup>

Weekly data reported from participating medical practitioners attributing patient office visits to "influenza like illness" (ILI)<sup>3</sup>

- Age 0-4 124
- Age 5-24 108
- Age 25-64 98
- 65 + 18

## Influenza & Pneumonia Mortality Surveillance

- Data from CDC 122 Cities Morbidity and Mortality Reporting System
- All age groups represented
- Five influenza-associated pediatric deaths were reported nation-wide and all were associated with novel influenza A (H1N1) virus for week ending 8/22/09.

## Great Lakes Naval Academy Febrile Respiratory Illness Surveillance Update

Febrile respiratory illness in military recruits at NRTC Great Lakes was reported as moderately elevated.

## Laboratory Surveillance<sup>4</sup>

- Eighteen specimens have been reported by IDPH laboratory for week ending 8/22/09.
- Influenza A (H1) 0
- Influenza A (H3) 1
- Influenza A (unknown) 2
- Influenza B 0
- Novel Influenza A (H1N1) 15

## National Influenza Surveillance

Two states and Puerto Rico reported widespread activity, 13 states reported regional activity, 10 states and the District of Columbia reported local activity, 24 states reported sporadic activity, one state reported no activity and Guam and the US Virgin Islands did not report.

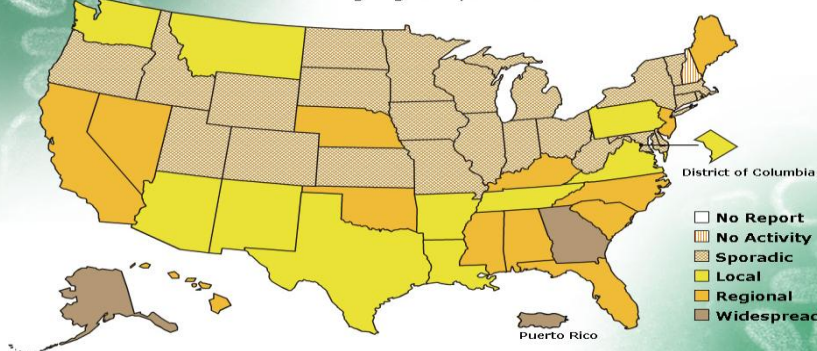
## Other References/Resources:

- Centers for Disease Control and Prevention Influenza Website: <http://www.cdc.gov/flu/weekly/fluactivity.htm>
- Immunization Action Coalition Website: <http://immunize.org/>
- IDPH Website <http://www.idph.state.il.us/flu/surveillance.htm>

## FLUVIEW

A Weekly Influenza Surveillance Report Prepared by the Influenza Division  
Weekly Influenza Activity Estimates Reported by State and Territorial Epidemiologists\*

Week Ending August 22, 2009- Week 33



\*This map indicates geographic spread and does not measure the severity of influenza activity.

**No activity:** No laboratory confirmed cases of influenza and no reported increase in cases of influenza like illness (ILI).

**<sup>2</sup>Sporadic:** Small numbers of laboratory confirmed influenza cases or a single laboratory confirmed influenza in a single region of the state.

**Local:** Outbreaks of influenza or increases in ILI and recent laboratory confirmed influenza in a single region of the state.

**Regional:** Outbreaks of influenza or increases in ILI and recent laboratory confirmed influenza in at least two but less than half the regions of the state.

**Widespread:** Outbreaks of influenza or increases in ILI cases and recent laboratory confirmed influenza in at least half the regions in the state.

<sup>3</sup>"Influenza like Illness" is defined as fever  $\geq 100^{\circ}\text{F}$  and cough and/or sore throat.

<sup>4</sup>Threshold=3.66%

<sup>5</sup>\*\*ILI data excluding the City of Chicago

<sup>1</sup>Data in this report is provisional and will be updated weekly