

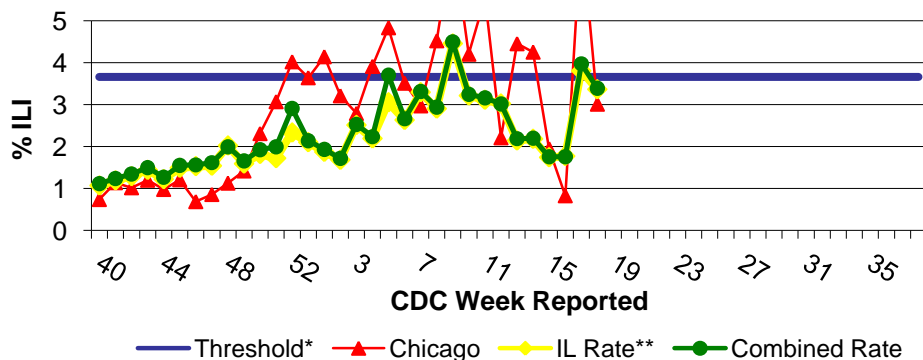
IDPH Weekly Influenza Surveillance Report

Week ending May 9, 2009¹ Influenza Activity Level: **LOCAL²**

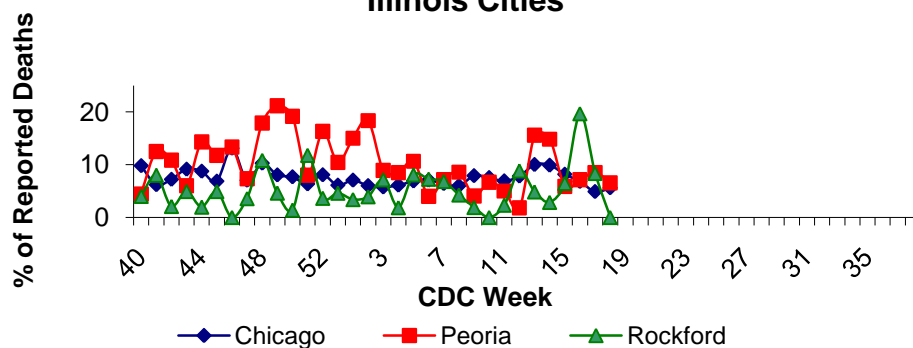


CDC Week	Sentinel Providers - %ILI	Lab Confirmed Specimens
18	3.39	374

Illinois Sentinel Provider Surveillance Network

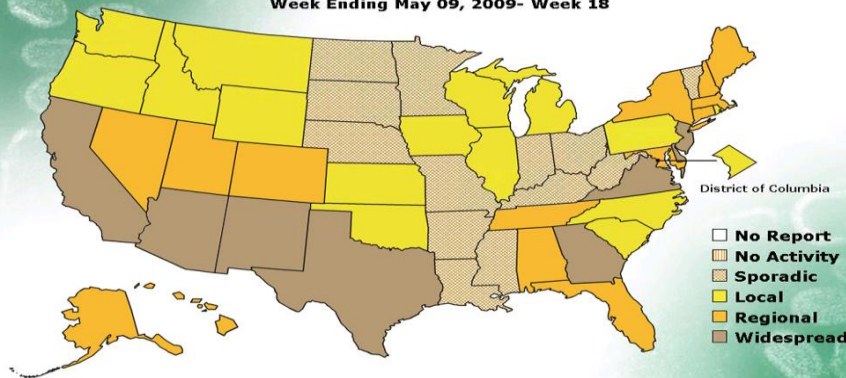


Influenza & Pneumonia Mortality in Selected Illinois Cities



FLUVIEW

A Weekly Influenza Surveillance Report Prepared by the Influenza Division
Weekly Influenza Activity Estimates Reported by State and Territorial Epidemiologists*
Week Ending May 09, 2009- Week 18



*This map indicates geographic spread and does not measure the severity of influenza activity.

No activity: No laboratory confirmed cases of influenza and no reported increase in cases of influenza like illness (ILI).

Sporadic: Small numbers of laboratory confirmed influenza cases or a single laboratory confirmed influenza in a single region of the state.

Local: Outbreaks of influenza or increases in ILI and recent laboratory confirmed influenza in a single region of the state.

Regional: Outbreaks of influenza or increases in ILI and recent laboratory confirmed influenza in at least two but less than half the regions of the state.

Widespread: Outbreaks of influenza or increases in ILI cases and recent laboratory confirmed influenza in at least half the regions of the state.

³"Influenza like Illness" is defined as fever $\geq 100^{\circ}\text{F}$ and cough and/or sore throat.

*Threshold=3.66%

**ILI data excluding the City of Chicago

¹Data in this report is provisional and will be updated weekly

Novel Influenza A (H1N1) Virus

In the US, two thousand two hundred fifty-four confirmed human infections with swine origin influenza A (H1N1) virus have been confirmed in 44 states as of 5/9/09.

Illinois Sentinel Provider Data

Weekly data reported from participating medical practitioners attributing patient office visits to "influenza like illness" (ILI)³

• Age 0-4	402
• Age 5-24	483
• Age 25-64	222
• 65 +	45

Influenza & Pneumonia Mortality Surveillance

- Data from CDC 122 Cities Morbidity and Mortality Reporting System
- All age groups represented
- Three influenza-associated pediatric deaths were reported nation-wide for CDC week 18.

Laboratory Surveillance

- Respiratory illness in military recruits at NRTC Great Lakes was reported as moderately elevated.
- Three hundred seventy-four specimens have been reported to IDPH for CDC week 18 (specimens tested between 5/3/09-5/9/09).

• Influenza A (H1)	12
• Influenza A (H3)	14
• Influenza A (unknown)	20
• Influenza B	0
• Novel Influenza A (H1N1)	328

National Influenza Surveillance

Eight states reported widespread activity, 14 states reported regional activity, the District of Columbia and 15 states reported local activity and 13 states reported sporadic activity.

Other References/Resources:

- Centers for Disease Control and Prevention Influenza Website:
<http://www.cdc.gov/flu/weekly/fluactivity.htm>
- Immunization Action Coalition Website:
<http://immunize.org/>
- IDPH Website
<http://www.idph.state.il.us/flu/surveillance.htm>