

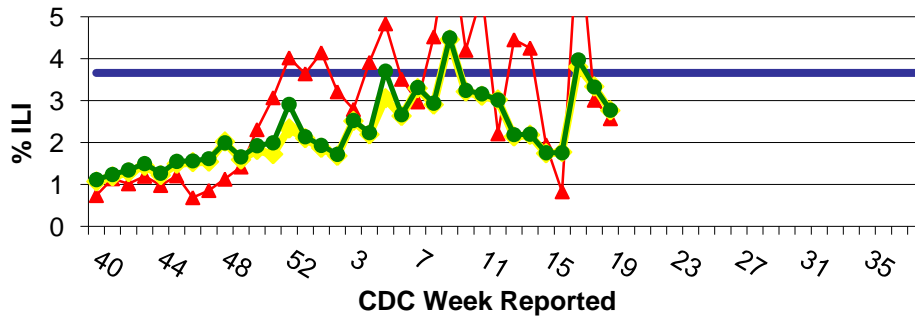
IDPH Weekly Influenza Surveillance Report

Week ending May 16, 2009¹ Influenza Activity Level: **REGIONAL²**

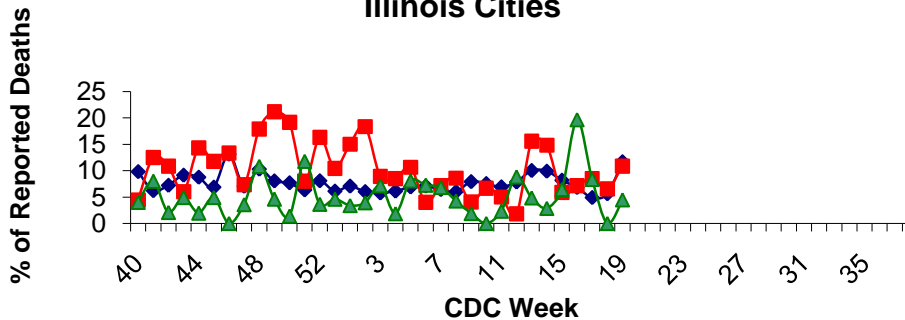


CDC Week	Sentinel Providers - %ILI	Lab Confirmed Specimens
19	2.77	320

Illinois Sentinel Provider Surveillance Network



Influenza & Pneumonia Mortality in Selected Illinois Cities



Novel Influenza A (H1N1) Virus

In the US, four thousand seven hundred fourteen human infections with swine origin influenza A (H1N1) virus have been confirmed in 47 states as of 5/15/09. There have been four deaths linked to H1N1 in 3 states - AZ (1), TX (2), WA (1).

Illinois Sentinel Provider Data

Weekly data reported from participating medical practitioners attributing patient office visits to "influenza like illness" (ILI)³

• Age 0-4	298
• Age 5-24	369
• Age 25-64	170
• 65 +	31

Influenza & Pneumonia Mortality Surveillance

- Data from CDC 122 Cities Morbidity and Mortality Reporting System
- All age groups represented
- Two influenza-associated pediatric deaths were reported nation-wide for CDC week 19.

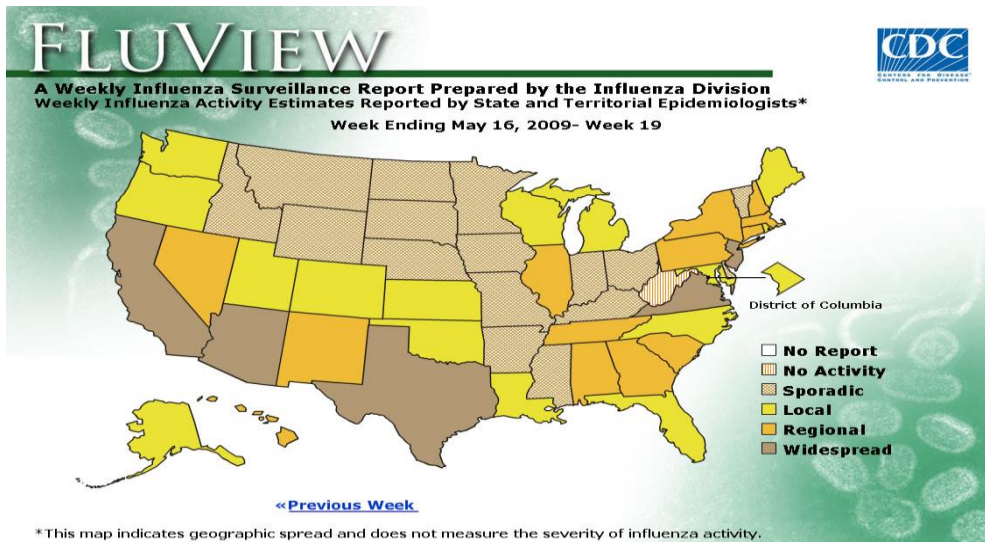
Laboratory Surveillance

- Respiratory illness in military recruits at NRTC Great Lakes was reported as moderately elevated.
- Two hundred fifty-nine specimens have been reported to IDPH for CDC week 19 (specimens tested between 5/10/09-5/15/09).

• Influenza A (H1)	2
• Influenza A (H3)	4
• Influenza A (unknown)	5
• Influenza B	0
• Novel Influenza A (H1N1)	309

National Influenza Surveillance

Five states reported widespread activity, 13 states reported regional activity, the District of Columbia and 15 states reported local activity, 16 states reported sporadic activity and one state reported no activity.



No activity: No laboratory confirmed cases of influenza and no reported increase in cases of influenza like illness (ILI).

Sporadic: Small numbers of laboratory confirmed influenza cases or a single laboratory confirmed influenza in a single region of the state.

Local: Outbreaks of influenza or increases in ILI and recent laboratory confirmed influenza in a single region of the state.

Regional: Outbreaks of influenza or increases in ILI and recent laboratory confirmed influenza in at least two but less than half the regions of the state.

Widespread: Outbreaks of influenza or increases in ILI cases and recent laboratory confirmed influenza in at least half the regions in the state.

³"Influenza like Illness" is defined as fever $\geq 100^{\circ}\text{F}$ and cough and/or sore throat.

*Threshold=3.66%

**ILI data excluding the City of Chicago

¹Data in this report is provisional and will be updated weekly

Other References/Resources:

- Centers for Disease Control and Prevention Influenza Website:
<http://www.cdc.gov/flu/weekly/fluactivity.htm>
- Immunization Action Coalition Website:
<http://immunize.org/>
- IDPH Website
<http://www.idph.state.il.us/flu/surveillance.htm>