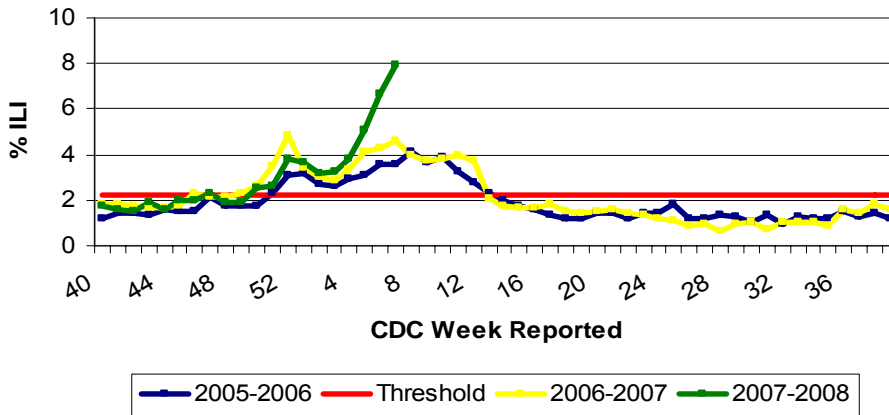


Illinois Department of Public Health  
 Weekly Influenza Surveillance Report

Week ending February 16, 2008<sup>1</sup>. Influenza Activity Level: **WIDESPREAD<sup>2</sup>**

CDC Week	Sentinel Physicians	School Based Clinics	School Absences	Laboratory Confirmed Specimens
07	7.97%	2.71%	5.87%	44

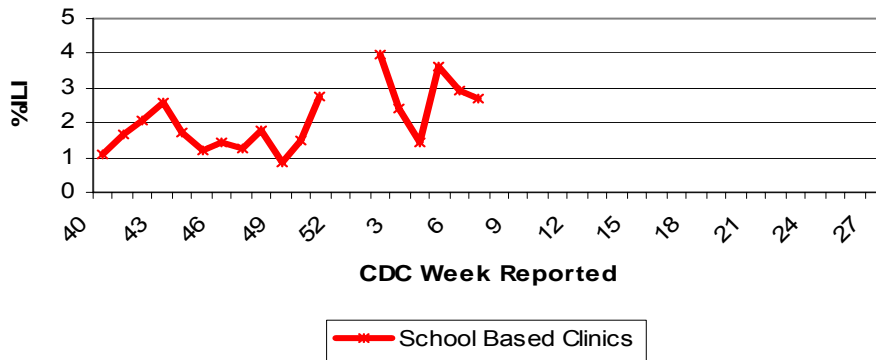
**Illinois Sentinel Physician Surveillance**



**Illinois Physician Sentinel Data**

- Weekly data reported from participating physicians attributing patient office visits to “influenza like illness” (ILI)<sup>3</sup>
- Age 0-4           339
- Age 5-24         633
- Age 25-64       584
- 65 +             122

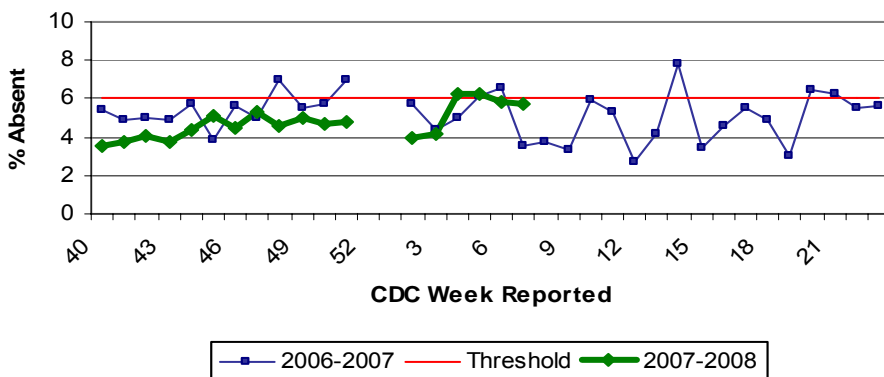
**School Based Clinics**



**School Based Clinics**

- Reports of students with influenza like illness (ILI) in selected clinics throughout the state
- Weeks 52 – Week 1 represent holiday break

**School Absenteeism Surveillance**

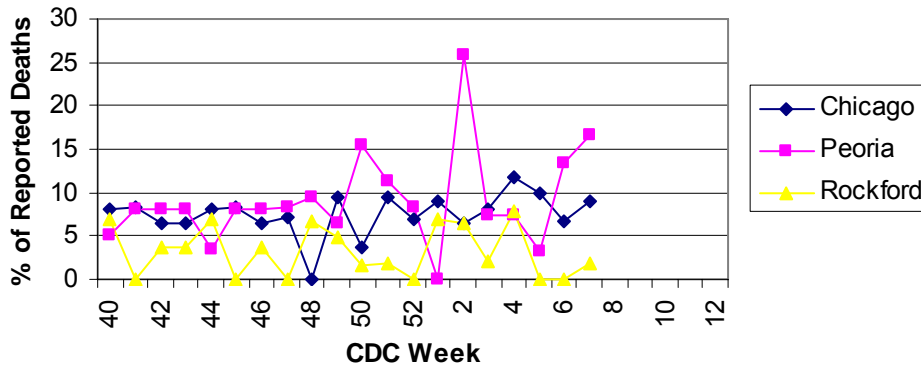


**School Absenteeism Surveillance**

- Selected schools throughout the state report student absence data, a surrogate indicator for influenza like illness during flu season (October – May)
- Weeks 52 – Week 1 represent holiday break

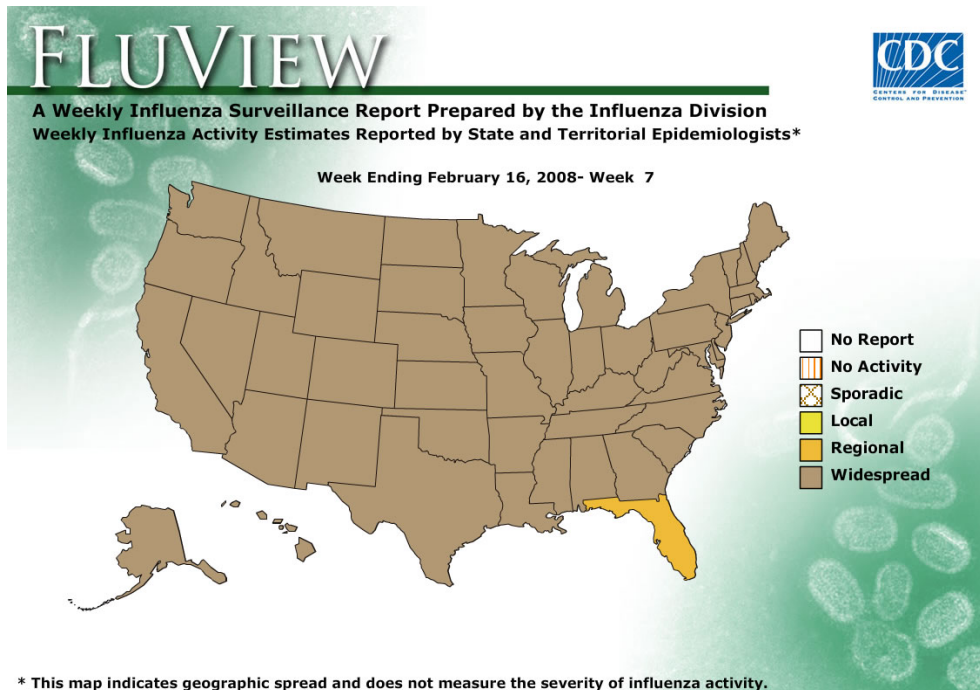
# Illinois Department of Public Health Weekly Influenza Surveillance Report

## Influenza & Pneumonia Mortality in Selected Illinois Cities



### Influenza & Pneumonia Mortality Surveillance

- Data from CDC 122 Cities Morbidity and Mortality Reporting System
- Reporting follows calendar year January through December
- All age groups represented
- No confirmed pediatric influenza or pneumonia deaths reported in Illinois



### Laboratory Surveillance

- Respiratory illness in military recruits at Naval Recruit Training Command Great Lakes was reported at moderately elevated levels during this week
- Fifty one laboratory specimens were submitted for testing, 44 tested positive for influenza
 

• Influenza A (H1)	3
• Influenza A (H3)	27
• Influenza A (unknown)	5
• Influenza B	9

### National Influenza Surveillance

- 49 states have reported widespread influenza activity

Other References/Resources:  
Other References/Resources:

- Centers for Disease Control and Prevention Influenza Website: <http://www.cdc.gov/flu/weekly/fluactivity.htm>
- Immunization Action Coalition Website: <http://immunize.org/>

<sup>1</sup>Data in this report is provisional and will be updated weekly.

<sup>2</sup> **No activity:** No laboratory confirmed cases of influenza and no reported increase in cases of influenza like illness (ILI).  
**Sporadic:** Small numbers of laboratory confirmed influenza cases or a single laboratory confirmed influenza in a single region of the state.  
**Local:** Outbreaks of influenza or increases in ILI and recent laboratory confirmed influenza in a single region of the state.  
**Regional:** Outbreaks of influenza or increases in ILI and recent laboratory confirmed influenza in at least two but less than half the regions of the state.  
**Widespread:** Outbreaks of influenza or increases in ILI cases and recent laboratory confirmed influenza in at least half the regions in the state.

<sup>3</sup> Influenza like illness is defined as fever  $\geq 100^{\circ}\text{F}$  and cough and or/ sore throat.