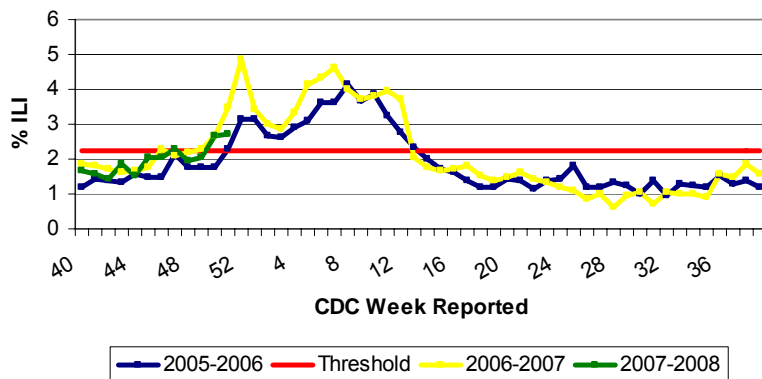


Illinois Department of Public Health Weekly Influenza Surveillance Report

Week ending December 22, 2007¹. Influenza Activity Level: **SPORADIC²**

CDC Week	Sentinel Physicians	School Based Clinics	School Absences	Laboratory Confirmed Specimens
51	2.30%	2.75%	4.81%	8

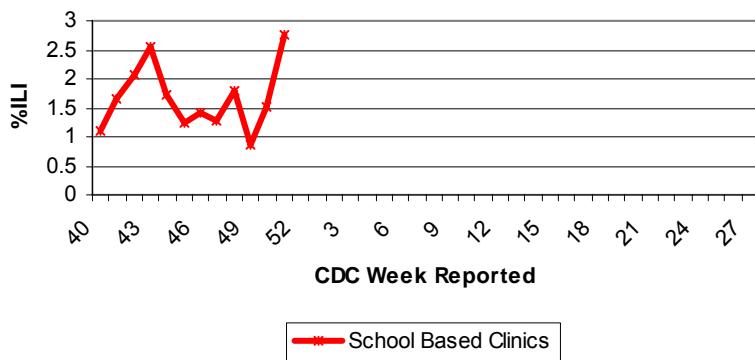
Illinois Sentinel Physician Surveillance



Illinois Physician Sentinel Data

- Weekly data reported from participating physicians attributing patient office visits to "influenza like illness" (ILI)³
- Age 0-4: 302
- Age 5-24: 210
- Age 25-64: 168
- 65+: 47

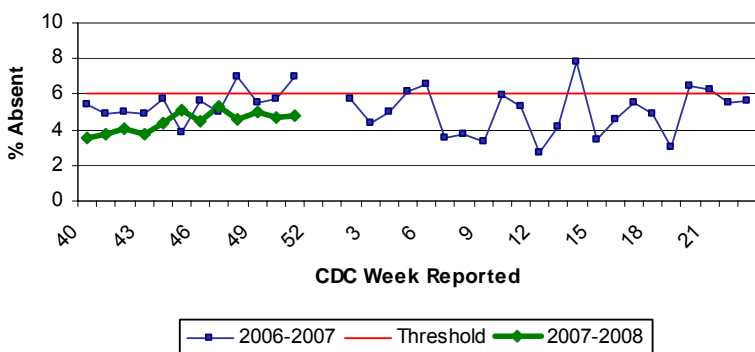
School Based Clinics



School Based Clinics

- Reports of students with influenza like illness (ILI) in selected clinics throughout the state
- Weeks 52 – Week 1 represent holiday break

School Absenteeism Surveillance



Long Term Care Facilities

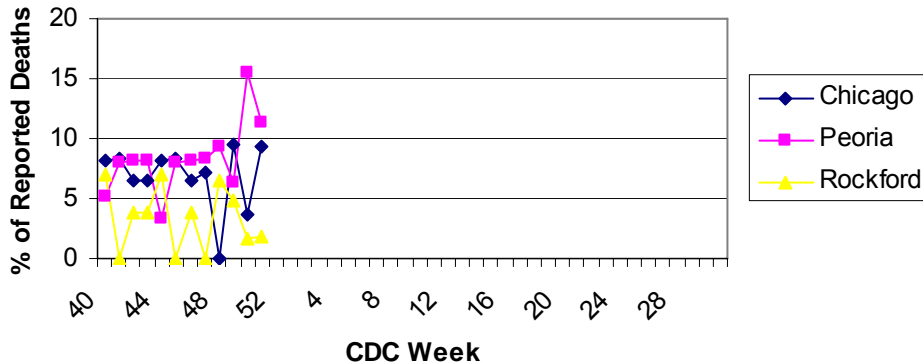
- Reports of residents with influenza like illness (ILI) in selected long term care facilities in the state

School Absenteeism Surveillance

- Selected schools throughout the state report student absence data, a surrogate indicator for influenza like illness during flu season (October – May)
- Weeks 52 – Week 1 represent holiday break

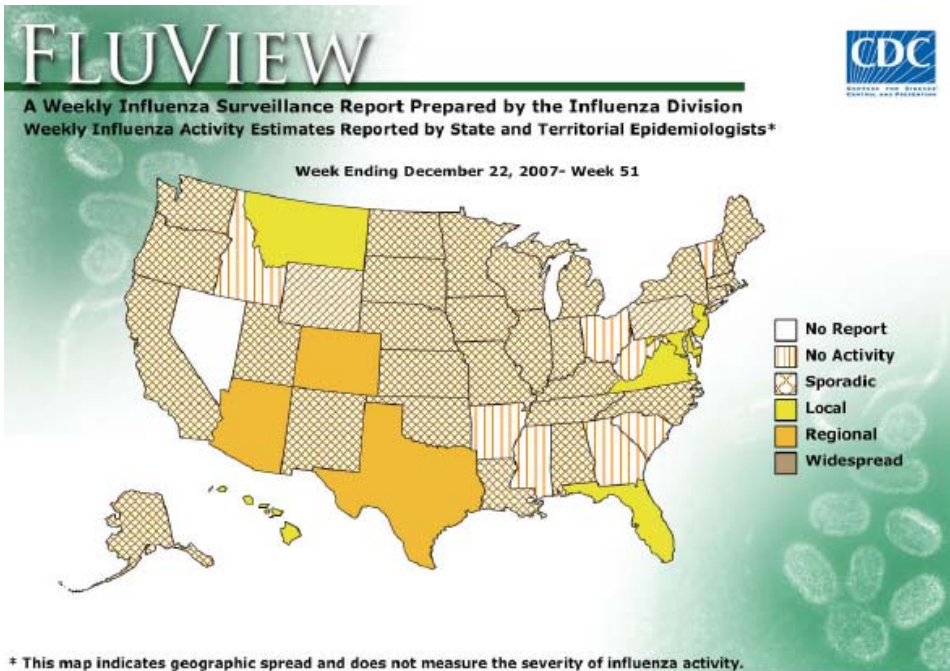
Illinois Department of Public Health Weekly Influenza Surveillance Report

Influenza & Pneumonia Mortality in Selected Illinois Cities



Influenza & Pneumonia Mortality Surveillance

- Data from CDC 122 Cities Morbidity and Mortality Reporting System
- All age groups represented
- One pediatric influenza/pneumonia death has been reported this season.



Laboratory Surveillance

- Nine laboratory specimens were submitted for testing, eight isolates were positive for influenza
- Influenza A (H1) 8
- Influenza A (H3) 0
- Influenza A (unknown) 0
- Influenza B 0

National Influenza Surveillance

- Three states reported regional influenza activity, 6 states local activity, 32 states sporadic activity, 8 states no activity. One state did not report.

Other References/Resources:

- Centers for Disease Control and Prevention Influenza Website: <http://www.cdc.gov/flu/weekly/fluactivity.htm>
- Immunization Action Coalition Website: <http://immunize.org/>

¹Data in this report is provisional and will be updated weekly.

² **No activity:** No laboratory confirmed cases of influenza and no reported increase in cases of influenza like illness (ILI).

Sporadic: Small numbers of laboratory confirmed influenza cases or a single laboratory confirmed influenza in a single region of the state.

Local: Outbreaks of influenza or increases in ILI and recent laboratory confirmed influenza in a single region of the state.

Regional: Outbreaks of influenza or increases in ILI and recent laboratory confirmed influenza in at least two but less than half the regions of the state.

Widespread: Outbreaks of influenza or increases in ILI cases and recent laboratory confirmed influenza in at least half the regions in the state.

³ Influenza like illness is defined as fever $\geq 100^{\circ}\text{F}$ and cough and or/ sore throat.