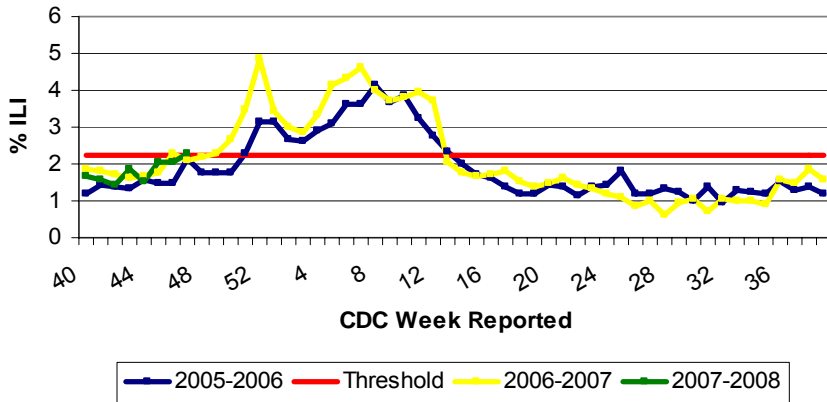


# Illinois Department of Public Health Weekly Influenza Surveillance Report

Week ending November 24, 2007<sup>1</sup>. Influenza Activity Level: **SPORADIC<sup>2</sup>**

CDC Week	Sentinel Physicians	School Based Clinics	School Absences	Laboratory Confirmed Specimen
47	2.30%	1.26%	5.30%	0

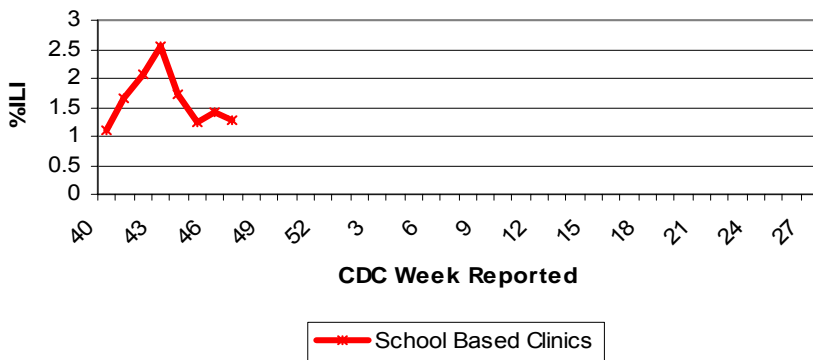
## Illinois Sentinel Physician Surveillance



## Illinois Physician Sentinel Data

- Weekly data reported from participating physicians attributing patient office visits to "influenza like illness" (ILI)<sup>3</sup>
- Age 0-4: 235
- Age 5-24: 149
- Age 25-64: 125
- 65+: 38

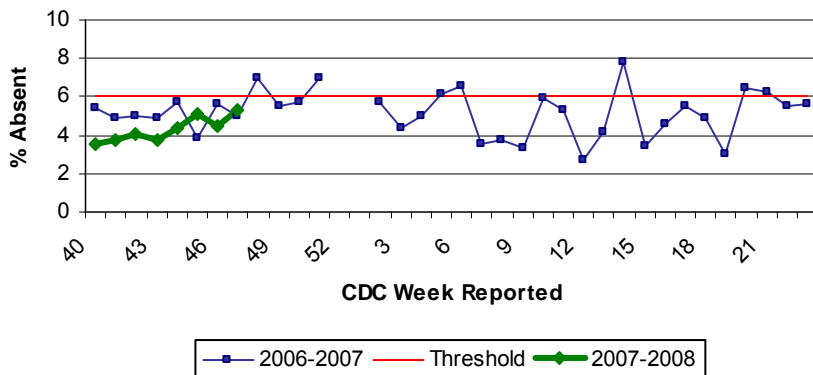
## School Based Clinics



## School Based Clinics

- Reports of students with influenza like illness (ILI) in selected clinics throughout the state
- Weeks 52 – Week 1 represent holiday break

## School Absenteeism Surveillance

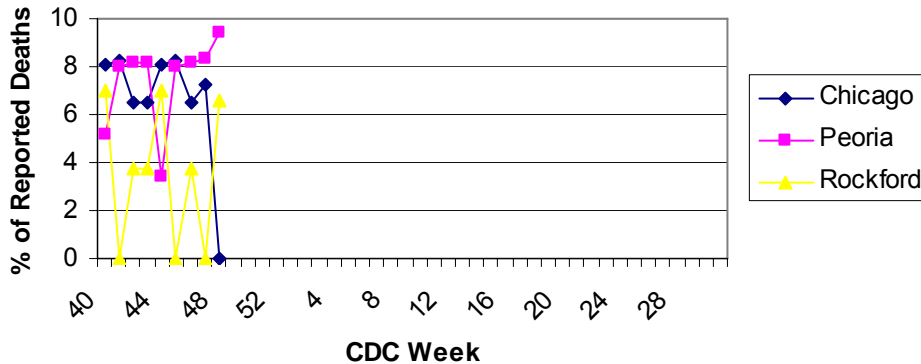


## School Absenteeism Surveillance

- Selected schools throughout the state report student absence data, a surrogate indicator for influenza like illness during flu season (October – May)
- Weeks 52 – Week 1 represent holiday break

# Illinois Department of Public Health Weekly Influenza Surveillance Report

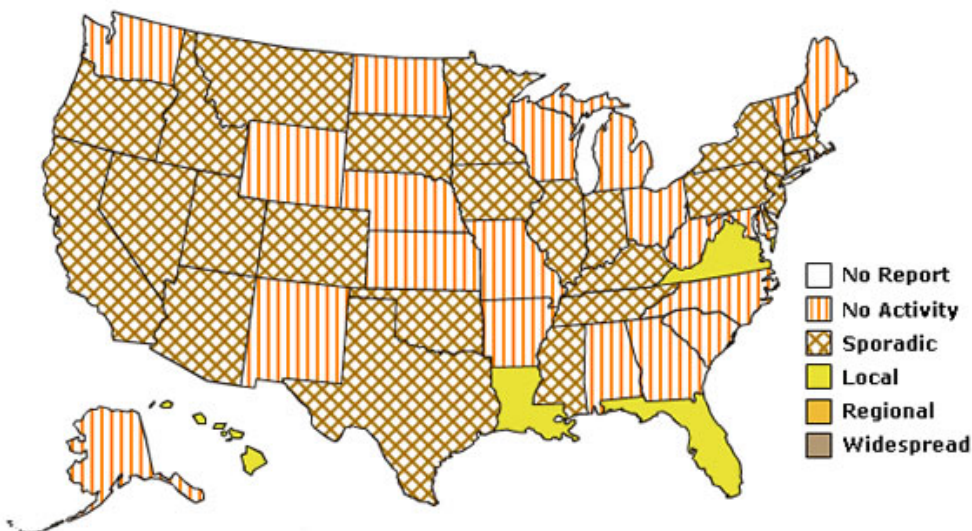
## Influenza & Pneumonia Mortality in Selected Illinois Cities



## Influenza & Pneumonia Mortality Surveillance

- Data from CDC 122 Cities Morbidity and Mortality Reporting System
- Reporting follows calendar year January through December
- All age groups represented
- No pediatric influenza/pneumonia deaths have been reported this season

Weekly Influenza Activity Estimates Reported by State and Territorial Epidemiologists\*  
Week Ending November 24, 2007 - Week 47



\*This map indicates geographic spread and does not measure the severity of influenza activity.

## Other References/Resources:

- Centers for Disease Control and Prevention Influenza Website: <http://www.cdc.gov/flu/weekly/fluactivity.htm>
- Immunization Action Coalition Website: <http://immunize.org/>

## Laboratory Surveillance

- One laboratory specimen were submitted for testing, no isolates were positive for influenza
- Influenza A (H1) 0
- Influenza A (H3) 0
- Influenza A (unknown) 0
- Influenza B 0

## National Influenza Surveillance

- Four states have reported local influenza activity, 24 states sporadic activity, and 22 states, no activity.

<sup>1</sup>Data in this report is provisional and will be updated weekly.

<sup>2</sup> **No activity:** No laboratory confirmed cases of influenza and no reported increase in cases of influenza like illness (ILI).

**Sporadic:** Small numbers of laboratory confirmed influenza cases or a single laboratory confirmed influenza in a single region of the state.

**Local:** Outbreaks of influenza or increases in ILI and recent laboratory confirmed influenza in a single region of the state.

**Regional:** Outbreaks of influenza or increases in ILI and recent laboratory confirmed influenza in at least two but less than half the regions of the state.

**Widespread:** Outbreaks of influenza or increases in ILI cases and recent laboratory confirmed influenza in at least half the regions in the state.

<sup>3</sup> Influenza like illness is defined as fever  $\geq 100^{\circ}\text{F}$  and cough and or/ sore throat.